

Daily Summary for Amman Stock Exchange

VALUE TRADED (JD)

	2019	2020	NET CHANGE	CHANGE (%)
Daily	4,243,744	5,231,179	987,435	23.27%
Cumulative(1/9-8/9)	32,234,801	25,229,387	-7,005,414	-21.73%
Cumulative(2/1-8/9)	958,029,176	635,615,841	-322,413,335	-33.65%

NO. OF SHARES TRADED

	2019	2020	NET CHANGE	CHANGE (%)
Daily	5,122,813	7,596,166	2,473,353	48.28%
Cumulative(1/9-8/9)	33,865,225	37,492,176	3,626,951	10.71%
Cumulative(2/1-8/9)	811,729,225	666,649,182	-145,080,043	-17.87%

NO. OF TRANSACTIONS

	2019	2020	NET CHANGE	CHANGE (%)
Daily	2,034	3,239	1,205	59.24%
Cumulative(1/9-8/9)	14,594	15,286	692	4.74%
Cumulative(2/1-8/9)	354,529	262,427	-92,102	-25.98%

SOME FINANCIAL RATIOS FOR THE ASE (8/9/2020)

SECTOR	P/E	P/BV	DIVIDEND YIELD (%)	TURNOVER (%)
FINANCIAL	9.065	0.736	0.171	0.085
SERVICES	11.476	1.000	5.312	0.149
INDUSTRY	15.798	1.296	3.319	0.258
OVERALL	9.836	0.863	1.817	0.120

STOCK PRICE INDEX WEIGHTED BY FREE FLOAT MARKET CAPITALIZATION (1999=1000)

	MONDAY 07/09/2020	TUESDAY 08/09/2020	% CHANGE	
			DAY BEFORE	YTD
GENERAL	1583.9	1584.0	0.01%	-12.74%
FINANCIAL	2099.4	2099.9	0.02%	-14.29%
SERVICES	1128.6	1125.0	-0.32%	-13.00%
INDUSTRY	1840.0	1848.2	0.45%	-0.47%

STOCK PRICE INDEX WEIGHTED BY FREE FLOAT MARKET CAPITALIZATION ASE20 (2014=1000)

	772.4	771.1	-0.16%	-13.45%
--	-------	-------	--------	---------

STOCK PRICE INDEX WEIGHTED BY MARKET CAPITALIZATION (1991=1000)

	MONDAY 07/09/2020	TUESDAY 08/09/2020	% CHANGE	
			DAY BEFORE	YTD
GENERAL	2906.4	2903.6	-0.10%	-17.36%
BANKS	5388.0	5367.0	-0.39%	-24.36%
INSURANCE	1298.7	1301.4	0.21%	1.48%
SERVICES	673.2	673.4	0.03%	-8.47%
INDUSTRY	2412.2	2421.4	0.38%	-7.34%

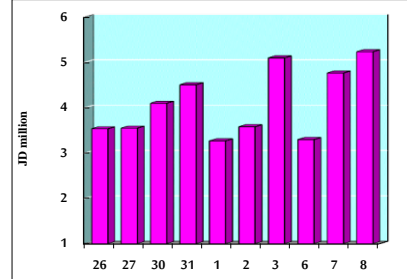
STOCK PRICE MARKET INDEX WEIGHTED BY FREE FLOAT MARKET CAP. (2012=1000)

	MONDAY 07/09/2020	TUESDAY 08/09/2020	% CHANGE	
			DAY BEFORE	YTD
FIRST MARKET	831.2	830.4	-0.10%	-13.12%
SECOND MARKET	814.5	821.1	0.82%	-1.78%

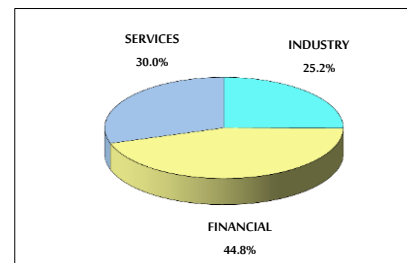
MARKET CAPITALIZATION (JD)

	12,342,762,514	12,334,113,632	-0.07%	-17.30%
--	----------------	----------------	--------	---------

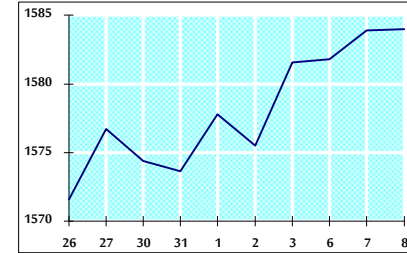
VALUE TRADED FROM 26/8 TO 8/9/2020



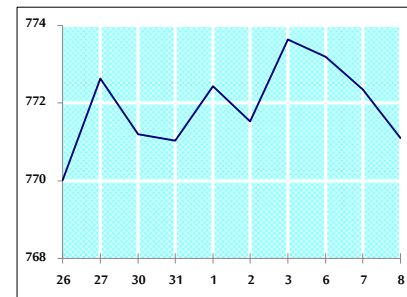
VALUE TRADED BY SECTOR TUESDAY 8/9/2020



GENERAL FREE FLOAT PRICE INDEX FROM 26/8 TO 8/9/2020



ASE20 FREE FLOAT PRICE INDEX FROM 26/8 TO 8/9/2020



GENERAL PRICE INDEX FROM 26/8 TO 8/9/2020

