

Daily Summary for Amman Stock Exchange

VALUE TRADED (JD)

	2019	2020	NET CHANGE	CHANGE (%)
Daily	3,766,410	5,486,306	1,719,896	45.66%
Cumulative(1/9-10/9)	39,702,171	35,503,704	-4,198,467	-10.57%
Cumulative(2/1-10/9)	965,496,546	645,890,158	-319,606,388	-33.10%

NO. OF SHARES TRADED

	2019	2020	NET CHANGE	CHANGE (%)
Daily	3,476,740	8,105,628	4,628,888	133.14%
Cumulative(1/9-10/9)	40,969,980	53,149,315	12,179,335	29.73%
Cumulative(2/1-10/9)	818,833,980	682,306,321	-136,527,659	-16.67%

NO. OF TRANSACTIONS

	2019	2020	NET CHANGE	CHANGE (%)
Daily	1,921	3,204	1,283	66.79%
Cumulative(1/9-10/9)	18,397	21,615	3,218	17.49%
Cumulative(2/1-10/9)	358,332	268,756	-89,576	-25.00%

SOME FINANCIAL RATIOS FOR THE ASE (10/9/2020)

SECTOR	P/E	P/BV	DIVIDEND YIELD (%)	TURNOVER (%)
FINANCIAL	9.080	0.737	0.171	0.079
SERVICES	11.493	1.001	5.305	0.248
INDUSTRY	15.780	1.295	3.323	0.198
OVERALL	9.842	0.863	1.816	0.128

STOCK PRICE INDEX WEIGHTED BY FREE FLOAT MARKET CAPITALIZATION (1999=1000)

	WEDNESDAY 09/09/2020	THURSDAY 10/09/2020	% CHANGE	
			DAY BEFORE	YTD
GENERAL	1585.5	1587.9	0.16%	-12.52%
FINANCIAL	2100.3	2109.9	0.46%	-13.88%
SERVICES	1125.9	1122.2	-0.33%	-13.21%
INDUSTRY	1852.9	1850.7	-0.12%	-0.34%

STOCK PRICE INDEX WEIGHTED BY FREE FLOAT MARKET CAPITALIZATION ASE20 (2014=1000)

	772.2	773.2	0.13%	-13.22%
--	-------	-------	-------	---------

STOCK PRICE INDEX WEIGHTED BY MARKET CAPITALIZATION (1991=1000)

	WEDNESDAY 09/09/2020	THURSDAY 10/09/2020	% CHANGE	
			DAY BEFORE	YTD
GENERAL	2904.6	2905.3	0.02%	-17.32%
BANKS	5367.9	5374.9	0.13%	-24.25%
INSURANCE	1300.0	1298.7	-0.10%	1.26%
SERVICES	673.6	675.3	0.25%	-8.21%
INDUSTRY	2423.2	2416.1	-0.29%	-7.54%

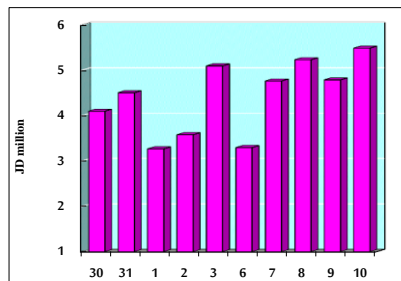
STOCK PRICE MARKET INDEX WEIGHTED BY FREE FLOAT MARKET CAP. (2012=1000)

	WEDNESDAY 09/09/2020	THURSDAY 10/09/2020	% CHANGE	
			DAY BEFORE	YTD
FIRST MARKET	830.9	831.7	0.10%	-12.99%
SECOND MARKET	822.8	829.7	0.84%	-0.76%

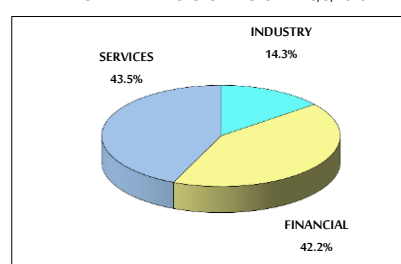
MARKET CAPITALIZATION (JD)

	12,339,055,176	12,344,588,435	0.04%	-17.23%
--	----------------	----------------	-------	---------

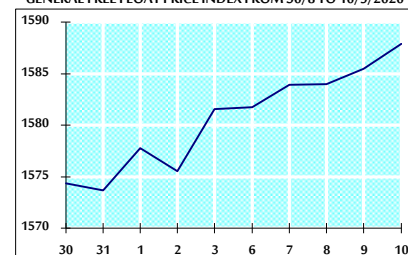
VALUE TRADED FROM 30/8 TO 10/9/2020



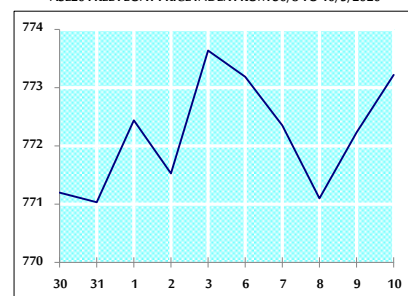
VALUE TRADED BY SECTOR THURSDAY 10/9/2020



GENERAL FREE FLOAT PRICE INDEX FROM 30/8 TO 10/9/2020



ASE20 FREE FLOAT PRICE INDEX FROM 30/8 TO 10/9/2020



GENERAL PRICE INDEX FROM 30/8 TO 9/9/2020

