

Daily Summary for Amman Stock Exchange

VALUE TRADED (JD)

	2019	2020	NET CHANGE	CHANGE (%)
Daily	5,718,927	3,920,032	-1,798,895	-31.46%
Cumulative(1/9-13/9)	45,421,098	39,423,736	-5,997,362	-13.20%
Cumulative(2/1-13/9)	971,215,473	649,810,190	-321,405,283	-33.09%

NO. OF SHARES TRADED

	2019	2020	NET CHANGE	CHANGE (%)
Daily	4,555,132	7,517,608	2,962,476	65.04%
Cumulative(1/9-13/9)	45,525,112	60,666,923	15,141,811	33.26%
Cumulative(2/1-13/9)	823,389,112	689,823,929	-133,565,183	-16.22%

NO. OF TRANSACTIONS

	2019	2020	NET CHANGE	CHANGE (%)
Daily	1,936	2,774	838	43.29%
Cumulative(1/9-13/9)	20,333	24,389	4,056	19.95%
Cumulative(2/1-13/9)	360,268	271,530	-88,738	-24.63%

SOME FINANCIAL RATIOS FOR THE ASE (13/9/2020)

SECTOR	P/E	P/BV	DIVIDEND YIELD (%)	TURNOVER (%)
FINANCIAL	9.100	0.739	0.171	0.063
SERVICES	11.546	1.006	5.280	0.193
INDUSTRY	15.796	1.296	3.319	0.298
OVERALL	9.864	0.865	1.812	0.119

STOCK PRICE INDEX WEIGHTED BY FREE FLOAT MARKET CAPITALIZATION (1999=1000)

	THURSDAY 10/09/2020	SUNDAY 13/09/2020	% CHANGE	
			DAY BEFORE	YTD
GENERAL	1587.9	1589.7	0.11%	-12.43%
FINANCIAL	2109.9	2109.4	-0.03%	-13.90%
SERVICES	1122.2	1128.6	0.57%	-12.72%
INDUSTRY	1850.7	1850.4	-0.02%	-0.35%

STOCK PRICE INDEX WEIGHTED BY FREE FLOAT MARKET CAPITALIZATION ASE20 (2014=1000)

	773.2	773.6	0.05%	-13.17%
--	-------	-------	-------	---------

STOCK PRICE INDEX WEIGHTED BY MARKET CAPITALIZATION (1991=1000)

	THURSDAY 10/09/2020	SUNDAY 13/09/2020	% CHANGE	
			DAY BEFORE	YTD
GENERAL	2905.3	2912.0	0.23%	-17.13%
BANKS	5374.9	5387.9	0.24%	-24.07%
INSURANCE	1298.7	1298.9	0.02%	1.28%
SERVICES	675.3	677.7	0.36%	-7.89%
INDUSTRY	2416.1	2419.6	0.14%	-7.41%

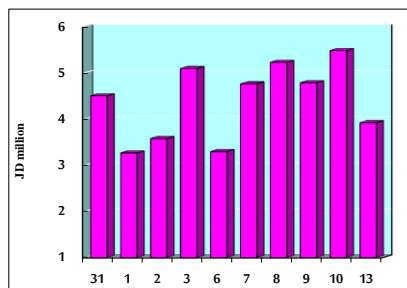
STOCK PRICE MARKET INDEX WEIGHTED BY FREE FLOAT MARKET CAP. (2012=1000)

	THURSDAY 10/09/2020	SUNDAY 13/09/2020	% CHANGE	
			DAY BEFORE	YTD
FIRST MARKET	831.7	831.9	0.02%	-12.97%
SECOND MARKET	829.7	835.8	0.73%	-0.03%

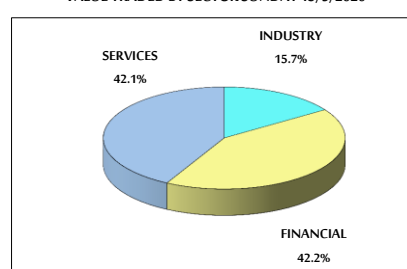
MARKET CAPITALIZATION (JD)

	12,344,588,435	12,372,426,704	0.23%	-17.05%
--	----------------	----------------	-------	---------

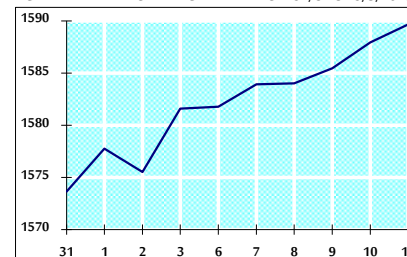
VALUE TRADED FROM 31/8 TO 13/9/2020



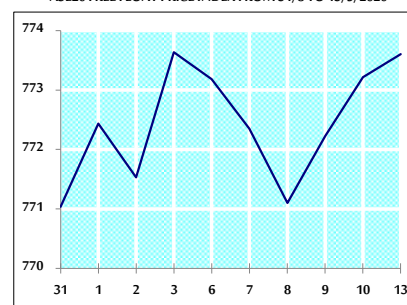
VALUE TRADED BY SECTOR SUNDAY 13/9/2020



GENERAL FREE FLOAT PRICE INDEX FROM 31/8 TO 13/9/2020



ASE20 FREE FLOAT PRICE INDEX FROM 31/8 TO 13/9/2020



GENERAL PRICE INDEX FROM 31/8 TO 13/9/2020

