

Daily Summary for Amman Stock Exchange

VALUE TRADED (JD)

	2019	2020	NET CHANGE	CHANGE (%)
Daily	37,716,185	5,305,460	-32,410,725	-85.93%
Cumulative(1/9-14/9)	83,137,283	44,729,196	-38,408,087	-46.20%
Cumulative(2/1-14/9)	1,008,931,658	655,115,650	-353,816,008	-35.07%

NO. OF SHARES TRADED

	2019	2020	NET CHANGE	CHANGE (%)
Daily	20,114,695	9,294,999	-10,819,696	-53.79%
Cumulative(1/9-14/9)	65,639,807	69,961,922	4,322,115	6.58%
Cumulative(2/1-14/9)	843,503,807	699,118,928	-144,384,879	-17.12%

NO. OF TRANSACTIONS

	2019	2020	NET CHANGE	CHANGE (%)
Daily	1,992	2,787	795	39.91%
Cumulative(1/9-14/9)	22,325	27,176	4,851	21.73%
Cumulative(2/1-14/9)	362,260	274,317	-87,943	-24.28%

SOME FINANCIAL RATIOS FOR THE ASE (14/9/2020)

SECTOR	P/E	P/BV	DIVIDEND YIELD (%)	TURNOVER (%)
FINANCIAL	9.129	0.741	0.170	0.070
SERVICES	11.506	1.003	5.298	0.148
INDUSTRY	15.812	1.297	3.316	0.550
OVERALL	9.880	0.867	1.809	0.147

STOCK PRICE INDEX WEIGHTED BY FREE FLOAT MARKET CAPITALIZATION (1999=1000)

	SUNDAY 13/09/2020	MONDAY 14/09/2020	% CHANGE	
			DAY BEFORE	YTD
GENERAL	1589.7	1590.0	0.02%	-12.41%
FINANCIAL	2109.4	2111.4	0.10%	-13.82%
SERVICES	1128.6	1125.6	-0.26%	-12.95%
INDUSTRY	1850.4	1854.1	0.20%	-0.15%

STOCK PRICE INDEX WEIGHTED BY FREE FLOAT MARKET CAPITALIZATION ASE20 (2014=1000)

	773.6	774.5	0.12%	-13.07%
--	-------	-------	-------	---------

STOCK PRICE INDEX WEIGHTED BY MARKET CAPITALIZATION (1991=1000)

	SUNDAY 13/09/2020	MONDAY 14/09/2020	% CHANGE	
			DAY BEFORE	YTD
GENERAL	2912.0	2916.7	0.16%	-16.99%
BANKS	5387.9	5409.6	0.40%	-23.76%
INSURANCE	1298.9	1296.2	-0.21%	1.07%
SERVICES	677.7	675.4	-0.34%	-8.20%
INDUSTRY	2419.6	2420.0	0.02%	-7.39%

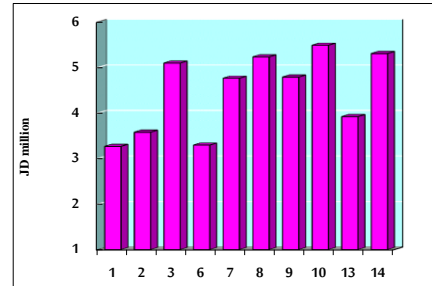
STOCK PRICE MARKET INDEX WEIGHTED BY FREE FLOAT MARKET CAP. (2012=1000)

	SUNDAY 13/09/2020	MONDAY 14/09/2020	% CHANGE	
			DAY BEFORE	YTD
FIRST MARKET	831.9	832.8	0.11%	-12.87%
SECOND MARKET	835.8	832.8	-0.35%	-0.38%

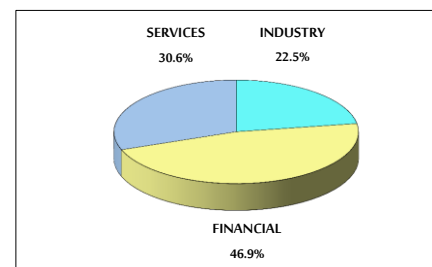
MARKET CAPITALIZATION (JD)

	12,372,426,704	12,392,411,419	0.16%	-16.91%
--	----------------	----------------	-------	---------

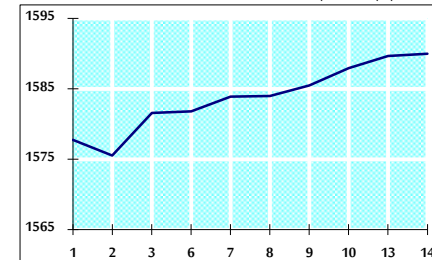
VALUE TRADED FROM 1/9 TO 14/9/2020



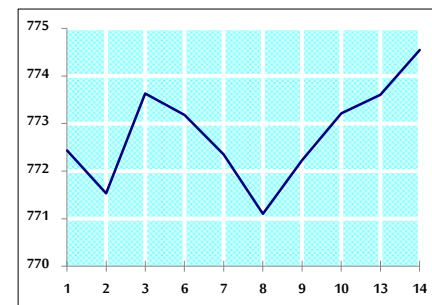
VALUE TRADED BY SECTOR MONDAY 14/9/2020



GENERAL FREE FLOAT PRICE INDEX FROM 1/9 TO 14/9/2020



ASE20 FREE FLOAT PRICE INDEX FROM 1/9 TO 14/9/2020



GENERAL PRICE INDEX FROM 1/9 TO 14/9/2020

