

Daily Summary for Amman Stock Exchange

VALUE TRADED (JD)

	2019	2020	NET CHANGE	CHANGE (%)
Daily	6,495,246	4,914,596	-1,580,650	-24.34%
Cumulative(1/9-24/9)	128,245,481	82,109,815	-46,135,666	-35.97%
Cumulative(2/1-24/9)	1,054,039,856	692,496,269	-361,543,587	-34.30%

NO. OF SHARES TRADED

	2019	2020	NET CHANGE	CHANGE (%)
Daily	6,435,104	6,014,482	-420,622	-6.54%
Cumulative(1/9-24/9)	107,016,286	123,237,779	16,221,493	15.16%
Cumulative(2/1-24/9)	884,880,286	752,394,785	-132,485,501	-14.97%

NO. OF TRANSACTIONS

	2019	2020	NET CHANGE	CHANGE (%)
Daily	2,242	2,296	54	2.41%
Cumulative(1/9-24/9)	39,836	44,104	4,268	10.71%
Cumulative(2/1-24/9)	379,771	291,245	-88,526	-23.31%

SOME FINANCIAL RATIOS FOR THE ASE (24/9/2020)

SECTOR	P/E	P/BV	DIVIDEND YIELD (%)	TURNOVER (%)
FINANCIAL	9.157	0.743	0.169	0.079
SERVICES	11.405	0.994	5.345	0.101
INDUSTRY	15.819	1.300	3.311	0.171
OVERALL	9.886	0.867	1.808	0.095

STOCK PRICE INDEX WEIGHTED BY FREE FLOAT MARKET CAPITALIZATION (1999=1000)

	WEDNESDAY 23/09/2020	THURSDAY 24/09/2020	% CHANGE	
			DAY BEFORE	YTD
GENERAL	1585.4	1585.2	-0.02%	-12.67%
FINANCIAL	2118.3	2114.4	-0.19%	-13.70%
SERVICES	1103.6	1106.1	0.23%	-14.46%
INDUSTRY	1849.3	1855.0	0.31%	-0.11%

STOCK PRICE INDEX WEIGHTED BY FREE FLOAT MARKET CAPITALIZATION ASE20 (2014=1000)

	774.5	773.4	-0.15%	-13.20%
--	-------	-------	--------	---------

STOCK PRICE INDEX WEIGHTED BY MARKET CAPITALIZATION (1991=1000)

	WEDNESDAY 23/09/2020	THURSDAY 24/09/2020	% CHANGE	
			DAY BEFORE	YTD
GENERAL	2918.1	2918.5	0.01%	-16.94%
BANKS	5450.2	5434.9	-0.28%	-23.41%
INSURANCE	1298.9	1298.3	-0.05%	1.23%
SERVICES	670.4	673.1	0.40%	-8.52%
INDUSTRY	2399.9	2408.5	0.36%	-7.83%

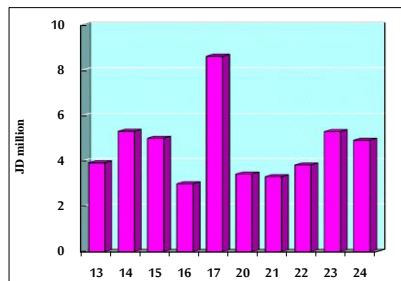
STOCK PRICE MARKET INDEX WEIGHTED BY FREE FLOAT MARKET CAP. (2012=1000)

	WEDNESDAY 23/09/2020	THURSDAY 24/09/2020	% CHANGE	
			DAY BEFORE	YTD
FIRST MARKET	832.7	831.7	-0.11%	-12.99%
SECOND MARKET	820.7	827.0	0.77%	-1.08%

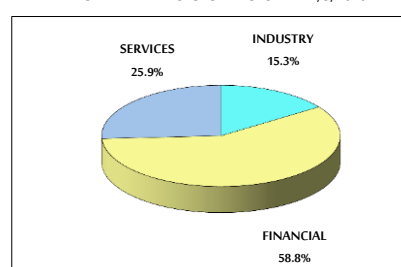
MARKET CAPITALIZATION (JD)

	12,402,139,427	12,403,718,657	0.01%	-16.84%
--	----------------	----------------	-------	---------

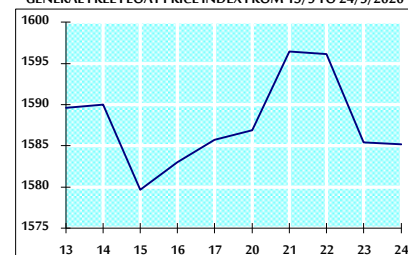
VALUE TRADED FROM 13/9 TO 24/9/2020



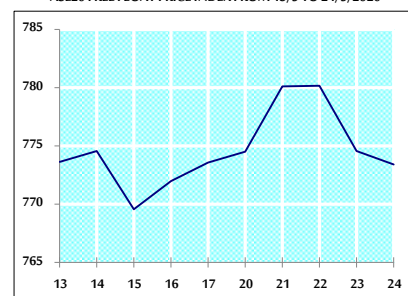
VALUE TRADED BY SECTOR THURSDAY 24/9/2020



GENERAL FREE FLOAT PRICE INDEX FROM 13/9 TO 24/9/2020



ASE20 FREE FLOAT PRICE INDEX FROM 13/9 TO 24/9/2020



GENERAL PRICE INDEX FROM 13/9 TO 24/9/2020

