

Daily Summary for Amman Stock Exchange

VALUE TRADED (JD)

	2019	2020	NET CHANGE	CHANGE (%)
Daily	5,015,298	2,989,550	-2,025,748	-40.39%
Cumulative(1/9-27/9)	133,260,779	85,099,365	-48,161,414	-36.14%
Cumulative(2/1-27/9)	1,059,055,154	695,485,819	-363,569,335	-34.33%

NO. OF SHARES TRADED

	2019	2020	NET CHANGE	CHANGE (%)
Daily	3,728,528	4,372,956	644,428	17.28%
Cumulative(1/9-27/9)	110,744,814	127,610,735	16,865,921	15.23%
Cumulative(2/1-27/9)	888,608,814	756,767,741	-131,841,073	-14.84%

NO. OF TRANSACTIONS

	2019	2020	NET CHANGE	CHANGE (%)
Daily	1,614	1,757	143	8.86%
Cumulative(1/9-27/9)	41,450	45,861	4,411	10.64%
Cumulative(2/1-27/9)	381,385	293,002	-88,383	-23.17%

SOME FINANCIAL RATIOS FOR THE ASE (27/9/2020)

SECTOR	P/E	P/BV	DIVIDEND YIELD (%)	TURNOVER (%)
FINANCIAL	9.127	0.741	0.170	0.042
SERVICES	11.401	0.993	5.347	0.065
INDUSTRY	15.827	1.301	3.309	0.219
OVERALL	9.862	0.865	1.813	0.069

STOCK PRICE INDEX WEIGHTED BY FREE FLOAT MARKET CAPITALIZATION (1999=1000)

	THURSDAY 24/09/2020	SUNDAY 27/09/2020	% CHANGE	
			DAY BEFORE	YTD
GENERAL	1585.2	1584.8	-0.02%	-12.69%
FINANCIAL	2114.4	2114.5	0.01%	-13.69%
SERVICES	1106.1	1104.7	-0.12%	-14.56%
INDUSTRY	1855.0	1856.9	0.11%	0.00%

STOCK PRICE INDEX WEIGHTED BY FREE FLOAT MARKET CAPITALIZATION ASE20 (2014=1000)

	773.4	773.3	-0.01%	-13.21%
--	-------	-------	--------	---------

STOCK PRICE INDEX WEIGHTED BY MARKET CAPITALIZATION (1991=1000)

	THURSDAY 24/09/2020	SUNDAY 27/09/2020	% CHANGE	
			DAY BEFORE	YTD
GENERAL	2918.5	2911.2	-0.25%	-17.15%
BANKS	5434.9	5410.3	-0.45%	-23.75%
INSURANCE	1298.3	1296.9	-0.10%	1.13%
SERVICES	673.1	674.2	0.17%	-8.36%
INDUSTRY	2408.5	2406.1	-0.10%	-7.92%

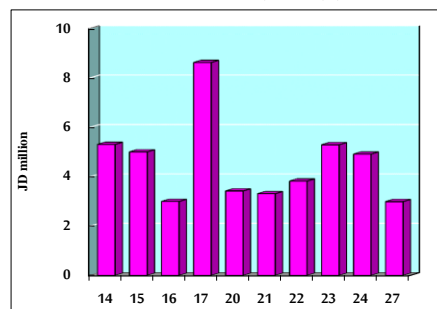
STOCK PRICE MARKET INDEX WEIGHTED BY FREE FLOAT MARKET CAP. (2012=1000)

	THURSDAY 24/09/2020	SUNDAY 27/09/2020	% CHANGE	
			DAY BEFORE	YTD
FIRST MARKET	831.7	831.2	-0.06%	-13.04%
SECOND MARKET	827.0	828.3	0.15%	-0.93%

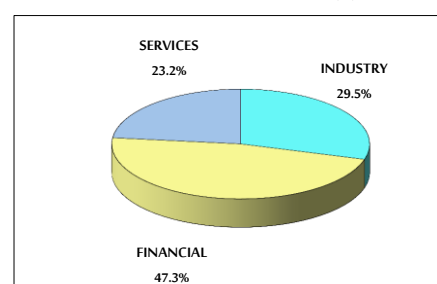
MARKET CAPITALIZATION (JD)

	12,403,718,657	12,380,920,449	-0.18%	-16.99%
--	----------------	----------------	--------	---------

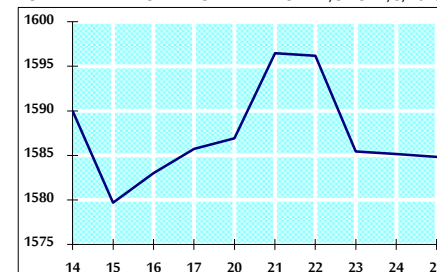
VALUE TRADED FROM 14/9 TO 27/9/2020



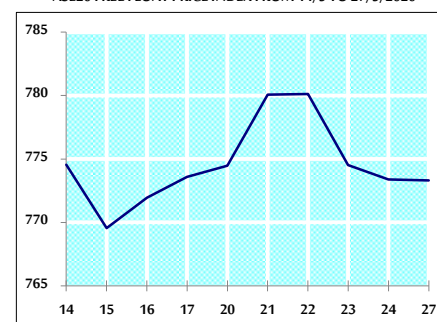
VALUE TRADED BY SECTOR SUNDAY 27/9/2020



GENERAL FREE FLOAT PRICE INDEX FROM 14/9 TO 27/9/2020



ASE20 FREE FLOAT PRICE INDEX FROM 14/9 TO 27/9/2020



GENERAL PRICE INDEX FROM 14/9 TO 27/9/2020

