

Daily Summary for Amman Stock Exchange

VALUE TRADED (JD)

	2019	2020	NET CHANGE	CHANGE (%)
Daily	4,645,265	4,526,896	-118,369	-2.55%
Cumulative(1/9-28/9)	137,906,044	89,626,261	-48,279,783	-35.01%
Cumulative(2/1-28/9)	1,063,700,419	700,012,715	-363,687,704	-34.19%

NO. OF SHARES TRADED

	2019	2020	NET CHANGE	CHANGE (%)
Daily	3,922,355	6,319,172	2,396,817	61.11%
Cumulative(1/9-28/9)	114,667,169	133,929,907	19,262,738	16.80%
Cumulative(2/1-28/9)	892,531,169	763,086,913	-129,444,256	-14.50%

NO. OF TRANSACTIONS

	2019	2020	NET CHANGE	CHANGE (%)
Daily	1,988	2,285	297	14.94%
Cumulative(1/9-28/9)	43,438	48,146	4,708	10.84%
Cumulative(2/1-28/9)	383,373	295,287	-88,086	-22.98%

SOME FINANCIAL RATIOS FOR THE ASE (28/9/2020)

SECTOR	P/E	P/BV	DIVIDEND YIELD (%)	TURNOVER (%)
FINANCIAL	9.118	0.740	0.170	0.066
SERVICES	11.363	0.990	5.365	0.105
INDUSTRY	15.834	1.302	3.308	0.269
OVERALL	9.852	0.864	1.814	0.100

STOCK PRICE INDEX WEIGHTED BY FREE FLOAT MARKET CAPITALIZATION (1999=1000)

	SUNDAY 27/09/2020	MONDAY 28/09/2020	% CHANGE	
			DAY BEFORE	YTD
GENERAL	1584.8	1583.7	-0.07%	-12.75%
FINANCIAL	2114.5	2113.6	-0.04%	-13.73%
SERVICES	1104.7	1100.1	-0.42%	-14.92%
INDUSTRY	1856.9	1859.7	0.15%	0.15%

STOCK PRICE INDEX WEIGHTED BY FREE FLOAT MARKET CAPITALIZATION ASE20 (2014=1000)

	773.3	772.3	-0.12%	-13.31%
--	-------	-------	--------	---------

STOCK PRICE INDEX WEIGHTED BY MARKET CAPITALIZATION (1991=1000)

	SUNDAY 27/09/2020	MONDAY 28/09/2020	% CHANGE	
			DAY BEFORE	YTD
GENERAL	2911.2	2908.5	-0.09%	-17.23%
BANKS	5410.3	5404.4	-0.11%	-23.83%
INSURANCE	1296.9	1288.8	-0.63%	0.49%
SERVICES	674.2	672.2	-0.31%	-8.64%
INDUSTRY	2406.1	2407.5	0.06%	-7.87%

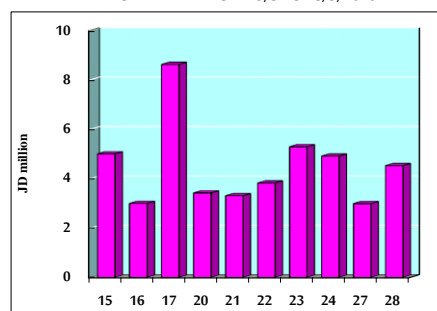
STOCK PRICE MARKET INDEX WEIGHTED BY FREE FLOAT MARKET CAP. (2012=1000)

	SUNDAY 27/09/2020	MONDAY 28/09/2020	% CHANGE	
			DAY BEFORE	YTD
FIRST MARKET	831.2	830.3	-0.11%	-13.13%
SECOND MARKET	828.3	829.1	0.10%	-0.83%

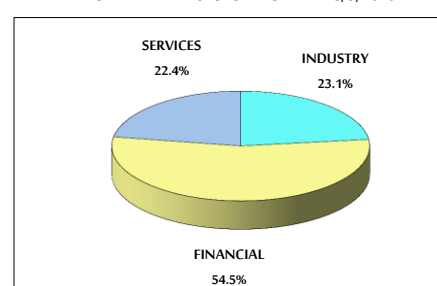
MARKET CAPITALIZATION (JD)

	12,380,920,449	12,368,934,475	-0.10%	-17.07%
--	----------------	----------------	--------	---------

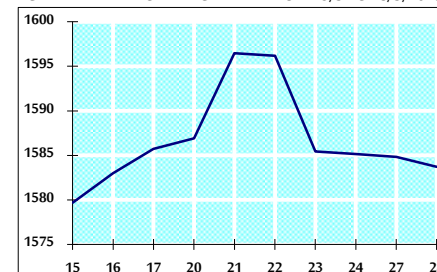
VALUE TRADED FROM 15/9 TO 28/9/2020



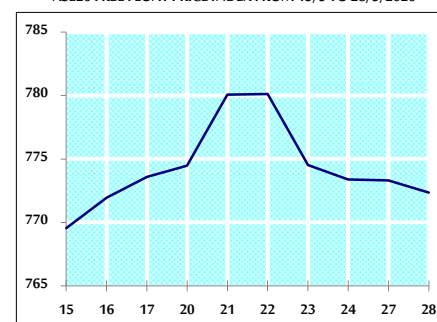
VALUE TRADED BY SECTOR MONDAY 28/9/2020



GENERAL FREE FLOAT PRICE INDEX FROM 15/9 TO 28/9/2020



ASE20 FREE FLOAT PRICE INDEX FROM 15/9 TO 28/9/2020



GENERAL PRICE INDEX FROM 15/9 TO 28/9/2020

