

Daily Summary for Amman Stock Exchange

VALUE TRADED (JD)

	2019	2020	NET CHANGE	CHANGE (%)
Daily	4,567,907	4,290,260	-277,647	-6.08%
Cumulative(1/10-14/10)	52,360,478	40,725,856	-11,634,622	-22.22%
Cumulative(2/1-14/10)	1,130,151,695	751,786,764	-378,364,931	-33.48%

NO. OF SHARES TRADED

	2019	2020	NET CHANGE	CHANGE (%)
Daily	5,019,172	5,069,000	49,828	0.99%
Cumulative(1/10-14/10)	43,424,942	49,913,847	6,488,905	14.94%
Cumulative(2/1-14/10)	946,952,605	827,340,433	-119,612,172	-12.63%

NO. OF TRANSACTIONS

	2019	2020	NET CHANGE	CHANGE (%)
Daily	1,932	1,939	7	0.36%
Cumulative(1/10-14/10)	20,756	17,219	-3,537	-17.04%
Cumulative(2/1-14/10)	408,095	316,822	-91,273	-22.37%

SOME FINANCIAL RATIOS FOR THE ASE (14/10/2020)

SECTOR	P/E	P/BV	DIVIDEND YIELD (%)	TURNOVER (%)
FINANCIAL	8.987	0.729	0.173	0.060
SERVICES	11.323	0.984	5.402	0.089
INDUSTRY	15.077	1.128	4.242	0.168
OVERALL	9.496	0.809	1.913	0.079

STOCK PRICE INDEX WEIGHTED BY FREE FLOAT MARKET CAPITALIZATION (1999=1000)

	TUESDAY 13/10/2020	WEDNESDAY 14/10/2020	% CHANGE	
			DAY BEFORE	YTD
GENERAL	1565.2	1571.8	0.42%	-13.41%
FINANCIAL	2085.4	2090.8	0.26%	-14.66%
SERVICES	1085.0	1096.5	1.06%	-15.20%
INDUSTRY	1886.1	1882.3	-0.20%	1.36%

STOCK PRICE INDEX WEIGHTED BY FREE FLOAT MARKET CAPITALIZATION ASE20 (2014=1000)

	761.1	765.2	0.54%	-14.12%
--	-------	-------	-------	---------

STOCK PRICE INDEX WEIGHTED BY MARKET CAPITALIZATION (1991=1000)

	TUESDAY 13/10/2020	WEDNESDAY 14/10/2020	% CHANGE	
			DAY BEFORE	YTD
GENERAL	2891.0	2899.5	0.30%	-17.48%
BANKS	5291.9	5303.4	0.22%	-25.26%
INSURANCE	1282.6	1290.4	0.60%	0.61%
SERVICES	672.5	672.8	0.04%	-8.56%
INDUSTRY	2476.8	2493.4	0.67%	-4.58%

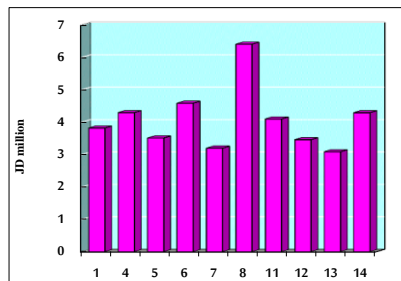
STOCK PRICE MARKET INDEX WEIGHTED BY FREE FLOAT MARKET CAP. (2012=1000)

	TUESDAY 13/10/2020	WEDNESDAY 14/10/2020	% CHANGE	
			DAY BEFORE	YTD
FIRST MARKET	819.0	823.3	0.53%	-13.86%
SECOND MARKET	829.4	826.6	-0.34%	-1.13%

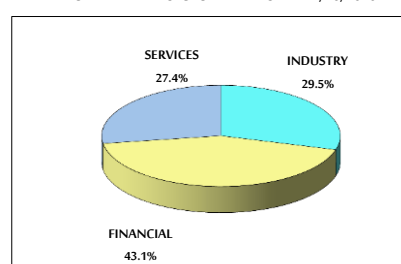
MARKET CAPITALIZATION (JD)

	12,310,524,097	12,342,222,063	0.26%	-17.25%
--	----------------	----------------	-------	---------

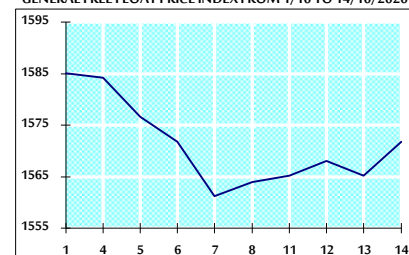
VALUE TRADED FROM 1/10 TO 14/10/2020



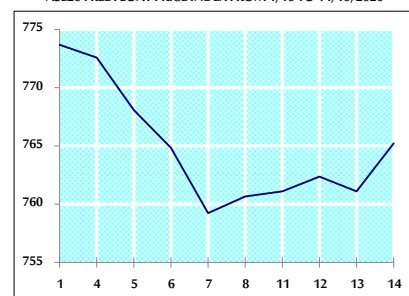
VALUE TRADED BY SECTOR WEDNESDAY 14/10/2020



GENERAL FREE FLOAT PRICE INDEX FROM 1/10 TO 14/10/2020



ASE20 FREE FLOAT PRICE INDEX FROM 1/10 TO 14/10/2020



GENERAL PRICE INDEX FROM 1/10 TO 14/10/2020

