

Daily Summary for Amman Stock Exchange

VALUE TRADED (JD)

	2019	2020	NET CHANGE	CHANGE (%)
Daily	7,133,921	3,367,595	-3,766,326	-52.79%
Cumulative(1/11-9/11)	42,670,292	27,176,657	-15,493,635	-36.31%
Cumulative(2/1-9/11)	1,379,727,851	817,269,367	-562,458,484	-40.77%

NO. OF SHARES TRADED

	2019	2020	NET CHANGE	CHANGE (%)
Daily	4,709,818	3,608,817	-1,101,001	-23.38%
Cumulative(1/11-9/11)	38,439,977	34,125,038	-4,314,939	-11.23%
Cumulative(2/1-9/11)	1,060,539,932	910,189,061	-150,350,871	-14.18%

NO. OF TRANSACTIONS

	2019	2020	NET CHANGE	CHANGE (%)
Daily	1,841	1,493	-348	-18.90%
Cumulative(1/11-9/11)	12,129	11,285	-844	-6.96%
Cumulative(2/1-9/11)	442,977	346,038	-96,939	-21.88%

SOME FINANCIAL RATIOS FOR THE ASE (9/11/2020)

SECTOR	P/E	P/BV	DIVIDEND YIELD (%)	TURNOVER (%)
FINANCIAL	8.886	0.720	0.175	0.051
SERVICES	11.149	0.969	5.487	0.040
INDUSTRY	15.210	1.138	4.205	0.114
OVERALL	9.409	0.801	1.931	0.057

STOCK PRICE INDEX WEIGHTED BY FREE FLOAT MARKET CAPITALIZATION (1999=1000)

	SUNDAY 08/11/2020	MONDAY 09/11/2020	% CHANGE	
			DAY BEFORE	YTD
GENERAL	1543.6	1548.5	0.31%	-14.69%
FINANCIAL	2062.8	2062.9	0.01%	-15.80%
SERVICES	1055.4	1065.5	0.95%	-17.60%
INDUSTRY	1904.9	1917.3	0.65%	3.25%

STOCK PRICE INDEX WEIGHTED BY FREE FLOAT MARKET CAPITALIZATION ASE20 (2014=1000)

	747.8	750.5	0.37%	-15.76%
--	-------	-------	-------	---------

STOCK PRICE INDEX WEIGHTED BY MARKET CAPITALIZATION (1991=1000)

	SUNDAY 08/11/2020	MONDAY 09/11/2020	% CHANGE	
			DAY BEFORE	YTD
GENERAL	2873.1	2873.1	0.00%	-18.23%
BANKS	5252.7	5244.1	-0.16%	-26.09%
INSURANCE	1285.4	1290.7	0.41%	0.64%
SERVICES	663.2	663.7	0.07%	-9.79%
INDUSTRY	2480.4	2487.9	0.30%	-4.79%

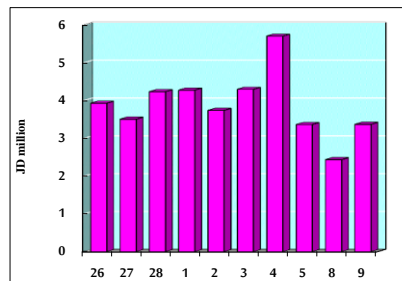
STOCK PRICE MARKET INDEX WEIGHTED BY FREE FLOAT MARKET CAP. (2012=1000)

	SUNDAY 08/11/2020	MONDAY 09/11/2020	% CHANGE	
			DAY BEFORE	YTD
FIRST MARKET	806.6	809.5	0.36%	-15.31%
SECOND MARKET	817.9	819.5	0.20%	-1.98%

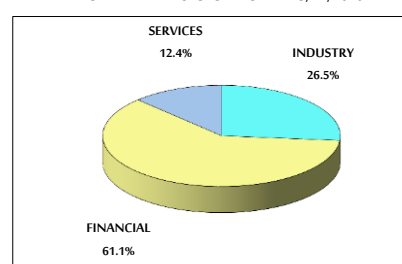
MARKET CAPITALIZATION (JD)

	12,251,491,460	12,257,559,187	0.05%	-17.82%
--	----------------	----------------	-------	---------

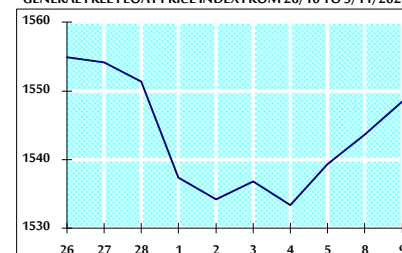
VALUE TRADED FROM 26/10 TO 9/11/2020



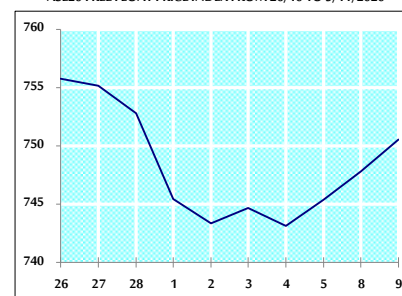
VALUE TRADED BY SECTOR MONDAY 9/11/2020



GENERAL FREE FLOAT PRICE INDEX FROM 26/10 TO 9/11/2020



ASE20 FREE FLOAT PRICE INDEX FROM 26/10 TO 9/11/2020



GENERAL PRICE INDEX FROM 26/10 TO 9/11/2020

