

Daily Summary for Amman Stock Exchange

VALUE TRADED (JD)

	2019	2020	NET CHANGE	CHANGE (%)
Daily	4,026,532	3,643,231	-383,301	-9.52%
Cumulative(1/11-15/11)	46,696,824	30,819,888	-15,876,936	-34.00%
Cumulative(2/1-15/11)	1,383,754,383	820,912,598	-562,841,785	-40.67%

NO. OF SHARES TRADED

	2019	2020	NET CHANGE	CHANGE (%)
Daily	3,927,173	4,018,552	91,379	2.33%
Cumulative(1/11-15/11)	42,367,150	38,143,590	-4,223,560	-9.97%
Cumulative(2/1-15/11)	1,064,467,105	914,207,613	-150,259,492	-14.12%

NO. OF TRANSACTIONS

	2019	2020	NET CHANGE	CHANGE (%)
Daily	2,099	1,565	-534	-25.44%
Cumulative(1/11-15/11)	14,228	12,850	-1,378	-9.69%
Cumulative(2/1-15/11)	445,076	347,603	-97,473	-21.90%

SOME FINANCIAL RATIOS FOR THE ASE (15/11/2020)

SECTOR	P/E	P/BV	DIVIDEND YIELD (%)	TURNOVER (%)
FINANCIAL	8.895	0.721	0.174	0.042
SERVICES	11.215	0.975	5.455	0.079
INDUSTRY	15.190	1.136	4.211	0.146
OVERALL	9.422	0.802	1.928	0.063

STOCK PRICE INDEX WEIGHTED BY FREE FLOAT MARKET CAPITALIZATION (1999=1000)

	MONDAY 09/11/2020	SUNDAY 15/11/2020	% CHANGE	
			DAY BEFORE	YTD
GENERAL	1548.5	1552.2	0.24%	-14.49%
FINANCIAL	2062.9	2064.5	0.08%	-15.73%
SERVICES	1065.5	1072.9	0.70%	-17.02%
INDUSTRY	1917.3	1916.8	-0.02%	3.22%

STOCK PRICE INDEX WEIGHTED BY FREE FLOAT MARKET CAPITALIZATION ASE20 (2014=1000)

	750.5	752.5	0.25%	-15.55%
--	-------	-------	-------	---------

STOCK PRICE INDEX WEIGHTED BY MARKET CAPITALIZATION (1991=1000)

	MONDAY 09/11/2020	SUNDAY 15/11/2020	% CHANGE	
			DAY BEFORE	YTD
GENERAL	2873.1	2876.9	0.13%	-18.12%
BANKS	5244.1	5249.7	0.11%	-26.01%
INSURANCE	1290.7	1291.9	0.10%	0.74%
SERVICES	663.7	665.7	0.30%	-9.52%
INDUSTRY	2487.9	2489.4	0.06%	-4.73%

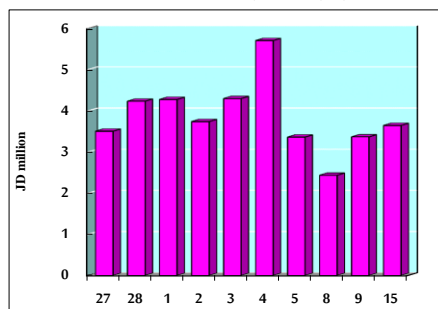
STOCK PRICE MARKET INDEX WEIGHTED BY FREE FLOAT MARKET CAP. (2012=1000)

	MONDAY 09/11/2020	SUNDAY 15/11/2020	% CHANGE	
			DAY BEFORE	YTD
FIRST MARKET	809.5	811.3	0.22%	-15.12%
SECOND MARKET	819.5	821.9	0.29%	-1.69%

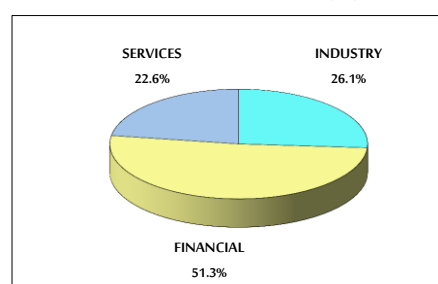
MARKET CAPITALIZATION (JD)

	12,257,559,187	12,271,746,519	0.12%	-17.72%
--	----------------	----------------	-------	---------

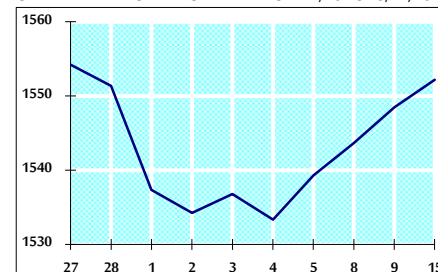
VALUE TRADED FROM 27/10 TO 15/11/2020



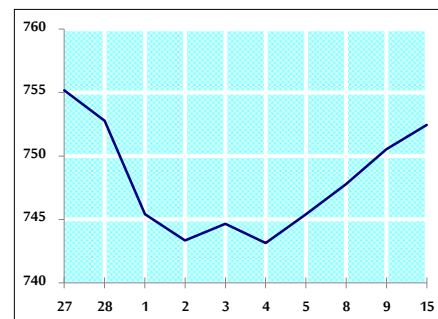
VALUE TRADED BY SECTOR SUNDAY 15/11/2020



GENERAL FREE FLOAT PRICE INDEX FROM 27/10 TO 15/11/2020



ASE20 FREE FLOAT PRICE INDEX FROM 27/10 TO 15/11/2020



GENERAL PRICE INDEX FROM 27/10 TO 15/11/2020

