

### Daily Summary for Amman Stock Exchange

VALUE TRADED (JD )

	2019	2020	NET CHANGE	CHANGE (%)
Daily	2,947,669	4,207,794	1,260,125	42.75%
Cumulative(1/11-16/11)	49,644,493	35,027,682	-14,616,811	-29.44%
Cumulative(2/1-16/11)	1,386,702,052	825,120,392	-561,581,660	-40.50%

NO. OF SHARES TRADED

	2019	2020	NET CHANGE	CHANGE (%)
Daily	2,513,147	5,329,340	2,816,193	112.06%
Cumulative(1/11-16/11)	44,880,297	43,472,930	-1,407,367	-3.14%
Cumulative(2/1-16/11)	1,066,980,252	919,536,953	-147,443,299	-13.82%

NO. OF TRANSACTIONS

	2019	2020	NET CHANGE	CHANGE (%)
Daily	1,538	1,846	308	20.03%
Cumulative(1/11-16/11)	15,766	14,696	-1,070	-6.79%
Cumulative(2/1-16/11)	446,614	349,449	-97,165	-21.76%

SOME FINANCIAL RATIOS FOR THE ASE (16/11/2020)

SECTOR	P/E	P/BV	DIVIDEND YIELD (%)	TURNOVER (%)
FINANCIAL	8.910	0.722	0.174	0.060
SERVICES	11.166	0.970	5.478	0.067
INDUSTRY	15.161	1.134	4.219	0.237
OVERALL	9.415	0.802	1.929	0.083

STOCK PRICE INDEX WEIGHTED BY FREE FLOAT MARKET CAPITALIZATION (1999=1000)

	SUNDAY 15/11/2020	MONDAY 16/11/2020	% CHANGE	
			DAY BEFORE	YTD
GENERAL	1552.2	1554.9	0.17%	-14.34%
FINANCIAL	2064.5	2072.0	0.36%	-15.43%
SERVICES	1072.9	1070.1	-0.26%	-17.24%
INDUSTRY	1916.8	1920.5	0.19%	3.42%

STOCK PRICE INDEX WEIGHTED BY FREE FLOAT MARKET CAPITALIZATION ASE20 (2014=1000)

	752.5	753.3	0.11%	-15.45%
--	-------	-------	-------	---------

STOCK PRICE INDEX WEIGHTED BY MARKET CAPITALIZATION (1991=1000)

	SUNDAY 15/11/2020	MONDAY 16/11/2020	% CHANGE	
			DAY BEFORE	YTD
GENERAL	2876.9	2875.0	-0.07%	-18.18%
BANKS	5249.7	5257.7	0.15%	-25.90%
INSURANCE	1291.9	1292.2	0.02%	0.76%
SERVICES	665.7	663.2	-0.37%	-9.85%
INDUSTRY	2489.4	2479.4	-0.40%	-5.12%

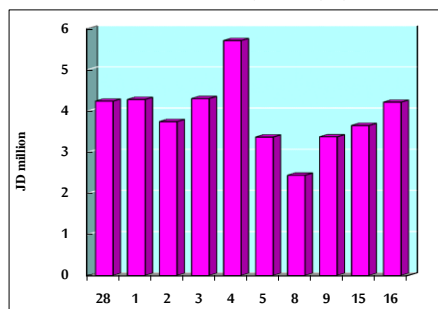
STOCK PRICE MARKET INDEX WEIGHTED BY FREE FLOAT MARKET CAP. (2012=1000)

	SUNDAY 15/11/2020	MONDAY 16/11/2020	% CHANGE	
			DAY BEFORE	YTD
FIRST MARKET	811.3	812.1	0.10%	-15.04%
SECOND MARKET	821.9	828.6	0.82%	-0.89%

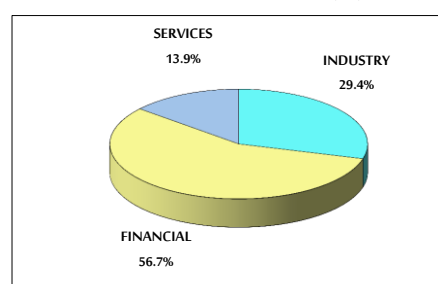
MARKET CAPITALIZATION (JD)

	12,271,746,519	12,271,293,003	0.00%	-17.72%
--	----------------	----------------	-------	---------

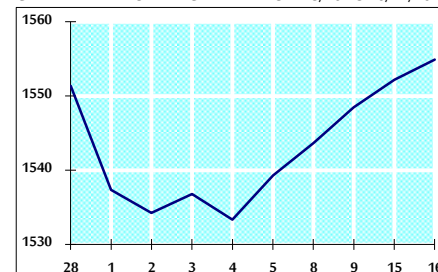
VALUE TRADED FROM 28/10 TO 16/11/2020



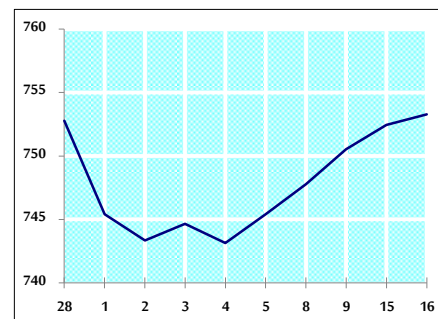
VALUE TRADED BY SECTOR MONDAY 16/11/2020



GENERAL FREE FLOAT PRICE INDEX FROM 28/10 TO 16/11/2020



ASE20 FREE FLOAT PRICE INDEX FROM 28/10 TO 16/11/2020



GENERAL PRICE INDEX FROM 28/10 TO 16/11/2020

