

## Daily Summary for Amman Stock Exchange

### VALUE TRADED (JD )

	2019	2020	NET CHANGE	CHANGE (%)
Daily	1,508,872	4,027,834	2,518,962	166.94%
Cumulative(1/11-17/11)	51,153,365	39,055,516	-12,097,849	-23.65%
Cumulative(2/1-17/11)	1,388,210,924	829,148,226	-559,062,698	-40.27%

### NO. OF SHARES TRADED

	2019	2020	NET CHANGE	CHANGE (%)
Daily	1,584,469	7,723,653	6,139,184	387.46%
Cumulative(1/11-17/11)	46,464,766	51,196,583	4,731,817	10.18%
Cumulative(2/1-17/11)	1,068,564,721	927,260,606	-141,304,115	-13.22%

### NO. OF TRANSACTIONS

	2019	2020	NET CHANGE	CHANGE (%)
Daily	1,249	2,120	871	69.74%
Cumulative(1/11-17/11)	17,015	16,816	-199	-1.17%
Cumulative(2/1-17/11)	447,863	351,569	-96,294	-21.50%

### SOME FINANCIAL RATIOS FOR THE ASE (17/11/2020)

SECTOR	P/E	P/BV	DIVIDEND YIELD (%)	TURNOVER (%)
FINANCIAL	8.940	0.725	0.173	0.120
SERVICES	11.202	0.974	5.461	0.121
INDUSTRY	15.169	1.134	4.217	0.128
OVERALL	9.437	0.804	1.925	0.121

### STOCK PRICE INDEX WEIGHTED BY FREE FLOAT MARKET CAPITALIZATION (1999=1000)

	MONDAY 16/11/2020	TUESDAY 17/11/2020	% CHANGE	
			DAY BEFORE	YTD
GENERAL	1554.9	1560.7	0.38%	-14.02%
FINANCIAL	2072.0	2077.7	0.27%	-15.20%
SERVICES	1070.1	1075.6	0.51%	-16.82%
INDUSTRY	1920.5	1931.4	0.57%	4.01%

### STOCK PRICE INDEX WEIGHTED BY FREE FLOAT MARKET CAPITALIZATION ASE20 (2014=1000)

	753.3	756.7	0.45%	-15.07%
--	-------	-------	-------	---------

### STOCK PRICE INDEX WEIGHTED BY MARKET CAPITALIZATION (1991=1000)

	MONDAY 16/11/2020	TUESDAY 17/11/2020	% CHANGE	
			DAY BEFORE	YTD
GENERAL	2875.0	2881.5	0.23%	-17.99%
BANKS	5257.7	5278.6	0.40%	-25.61%
INSURANCE	1292.2	1297.4	0.40%	1.16%
SERVICES	663.2	663.3	0.01%	-9.84%
INDUSTRY	2479.4	2477.7	-0.07%	-5.19%

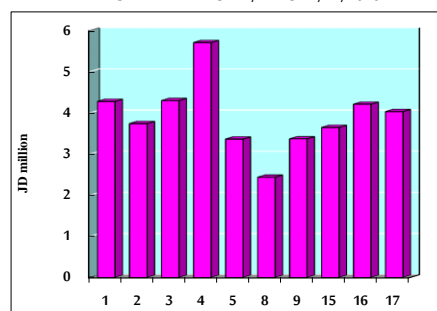
### STOCK PRICE MARKET INDEX WEIGHTED BY FREE FLOAT MARKET CAP. (2012=1000)

	MONDAY 16/11/2020	TUESDAY 17/11/2020	% CHANGE	
			DAY BEFORE	YTD
FIRST MARKET	812.1	815.6	0.43%	-14.68%
SECOND MARKET	828.6	827.8	-0.10%	-0.99%

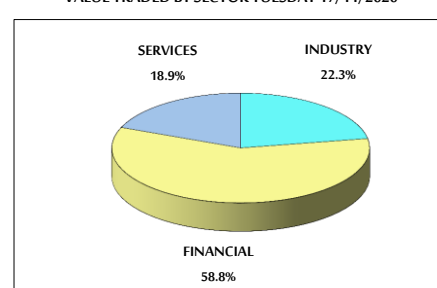
### MARKET CAPITALIZATION (JD)

	12,271,293,003	12,300,060,582	0.23%	-17.53%
--	----------------	----------------	-------	---------

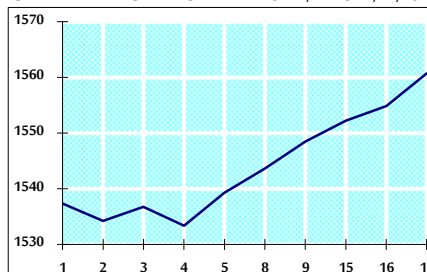
### VALUE TRADED FROM 1/11 TO 17/11/2020



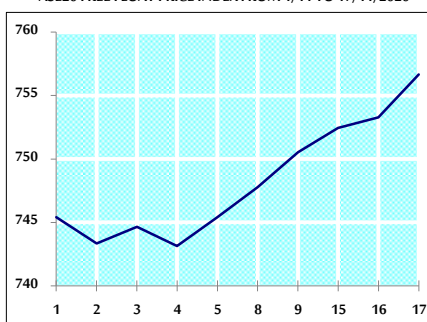
### VALUE TRADED BY SECTOR TUESDAY 17/11/2020



### GENERAL FREE FLOAT PRICE INDEX FROM 1/11 TO 17/11/2020



### ASE20 FREE FLOAT PRICE INDEX FROM 1/11 TO 17/11/2020



### GENERAL PRICE INDEX FROM 1/11 TO 17/11/2020

