

Daily Summary for Amman Stock Exchange

VALUE TRADED (JD)

	2019	2020	NET CHANGE	CHANGE (%)
Daily	2,997,182	3,352,347	355,165	11.85%
Cumulative(1/11-18/11)	54,150,547	42,407,863	-11,742,684	-21.69%
Cumulative(2/1-18/11)	1,391,208,106	832,500,573	-558,707,533	-40.16%

NO. OF SHARES TRADED

	2019	2020	NET CHANGE	CHANGE (%)
Daily	4,332,058	5,798,867	1,466,809	33.86%
Cumulative(1/11-18/11)	50,796,824	56,995,450	6,198,626	12.20%
Cumulative(2/1-18/11)	1,072,896,779	933,059,473	-139,837,306	-13.03%

NO. OF TRANSACTIONS

	2019	2020	NET CHANGE	CHANGE (%)
Daily	1,672	1,679	7	0.42%
Cumulative(1/11-18/11)	18,687	18,495	-192	-1.03%
Cumulative(2/1-18/11)	449,535	353,248	-96,287	-21.42%

SOME FINANCIAL RATIOS FOR THE ASE (18/11/2020)

SECTOR	P/E	P/BV	DIVIDEND YIELD (%)	TURNOVER (%)
FINANCIAL	8.950	0.726	0.173	0.048
SERVICES	11.196	0.973	5.464	0.077
INDUSTRY	15.132	1.132	4.227	0.342
OVERALL	9.431	0.803	1.926	0.091

STOCK PRICE INDEX WEIGHTED BY FREE FLOAT MARKET CAPITALIZATION (1999=1000)

	TUESDAY 17/11/2020	WEDNESDAY 18/11/2020	% CHANGE	
			DAY BEFORE	YTD
GENERAL	1560.7	1558.3	-0.16%	-14.16%
FINANCIAL	2077.7	2076.1	-0.08%	-15.26%
SERVICES	1075.6	1071.6	-0.37%	-17.13%
INDUSTRY	1931.4	1938.1	0.35%	4.37%

STOCK PRICE INDEX WEIGHTED BY FREE FLOAT MARKET CAPITALIZATION ASE20 (2014=1000)

	756.7	754.2	-0.32%	-15.35%
--	-------	-------	--------	---------

STOCK PRICE INDEX WEIGHTED BY MARKET CAPITALIZATION (1991=1000)

	TUESDAY 17/11/2020	WEDNESDAY 18/11/2020	% CHANGE	
			DAY BEFORE	YTD
GENERAL	2881.5	2879.8	-0.06%	-18.04%
BANKS	5278.6	5283.3	0.09%	-25.54%
INSURANCE	1297.4	1303.0	0.43%	1.60%
SERVICES	663.3	663.9	0.09%	-9.76%
INDUSTRY	2477.7	2463.4	-0.58%	-5.73%

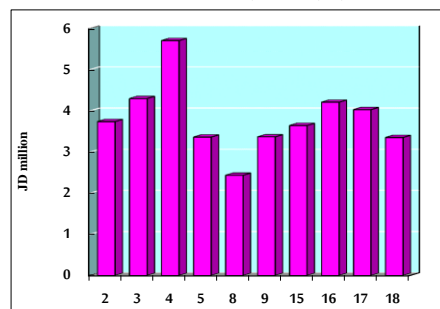
STOCK PRICE MARKET INDEX WEIGHTED BY FREE FLOAT MARKET CAP. (2012=1000)

	TUESDAY 17/11/2020	WEDNESDAY 18/11/2020	% CHANGE	
			DAY BEFORE	YTD
FIRST MARKET	815.6	813.3	-0.27%	-14.91%
SECOND MARKET	827.8	831.3	0.42%	-0.57%

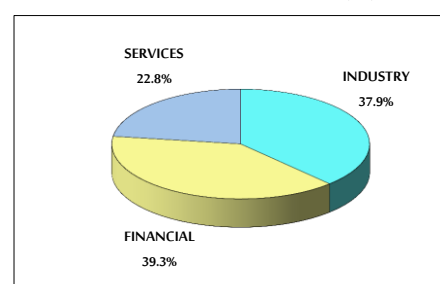
MARKET CAPITALIZATION (JD)

	12,300,060,582	12,301,204,050	0.01%	-17.52%
--	----------------	----------------	-------	---------

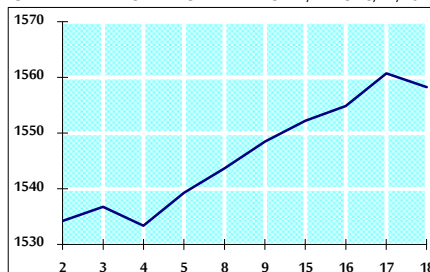
VALUE TRADED FROM 2/11 TO 18/11/2020



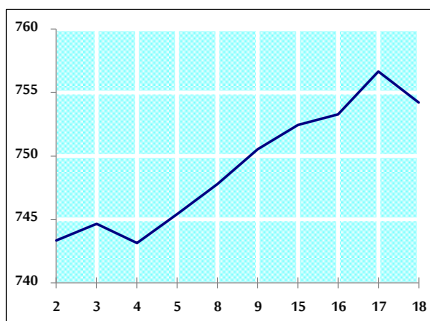
VALUE TRADED BY SECTOR WEDNESDAY 18/11/2020



GENERAL FREE FLOAT PRICE INDEX FROM 2/11 TO 18/11/2020



ASE20 FREE FLOAT PRICE INDEX FROM 2/11 TO 18/11/2020



GENERAL PRICE INDEX FROM 2/11 TO 18/11/2020

