

Daily Summary for Amman Stock Exchange

VALUE TRADED (JD)

	2019	2020	NET CHANGE	CHANGE (%)
Daily	6,278,696	3,697,573	-2,581,123	-41.11%
Cumulative(1/11-19/11)	60,429,243	46,105,436	-14,323,807	-23.70%
Cumulative(2/1-19/11)	1,397,486,802	836,198,146	-561,288,656	-40.16%

NO. OF SHARES TRADED

	2019	2020	NET CHANGE	CHANGE (%)
Daily	6,588,503	5,557,076	-1,031,427	-15.65%
Cumulative(1/11-19/11)	57,385,327	62,552,526	5,167,199	9.00%
Cumulative(2/1-19/11)	1,079,485,282	938,616,549	-140,868,733	-13.05%

NO. OF TRANSACTIONS

	2019	2020	NET CHANGE	CHANGE (%)
Daily	2,006	1,668	-338	-16.85%
Cumulative(1/11-19/11)	20,693	20,163	-530	-2.56%
Cumulative(2/1-19/11)	451,541	354,916	-96,625	-21.40%

SOME FINANCIAL RATIOS FOR THE ASE (19/11/2020)

SECTOR	P/E	P/BV	DIVIDEND YIELD (%)	TURNOVER (%)
FINANCIAL	8.883	0.720	0.175	0.064
SERVICES	11.193	0.973	5.465	0.149
INDUSTRY	15.353	1.148	4.166	0.112
OVERALL	9.408	0.801	1.931	0.087

STOCK PRICE INDEX WEIGHTED BY FREE FLOAT MARKET CAPITALIZATION (1999=1000)

	WEDNESDAY 18/11/2020	THURSDAY 19/11/2020	% CHANGE	
			DAY BEFORE	YTD
GENERAL	1558.3	1555.5	-0.18%	-14.31%
FINANCIAL	2076.1	2066.7	-0.45%	-15.64%
SERVICES	1071.6	1072.1	0.05%	-17.09%
INDUSTRY	1938.1	1963.3	1.30%	5.73%

STOCK PRICE INDEX WEIGHTED BY FREE FLOAT MARKET CAPITALIZATION ASE20 (2014=1000)

	754.2	752.4	-0.24%	-15.55%
--	-------	-------	--------	---------

STOCK PRICE INDEX WEIGHTED BY MARKET CAPITALIZATION (1991=1000)

	WEDNESDAY 18/11/2020	THURSDAY 19/11/2020	% CHANGE	
			DAY BEFORE	YTD
GENERAL	2879.8	2872.9	-0.24%	-18.24%
BANKS	5283.3	5236.3	-0.89%	-26.20%
INSURANCE	1303.0	1301.0	-0.15%	1.44%
SERVICES	663.9	663.8	-0.02%	-9.78%
INDUSTRY	2463.4	2493.2	1.21%	-4.59%

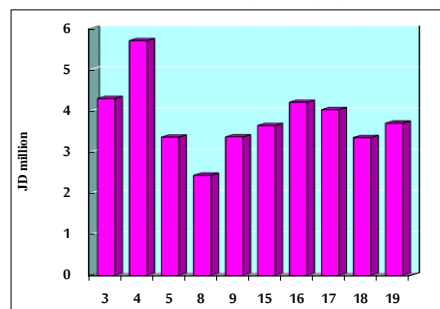
STOCK PRICE MARKET INDEX WEIGHTED BY FREE FLOAT MARKET CAP. (2012=1000)

	WEDNESDAY 18/11/2020	THURSDAY 19/11/2020	% CHANGE	
			DAY BEFORE	YTD
FIRST MARKET	813.3	811.5	-0.22%	-15.10%
SECOND MARKET	831.3	833.8	0.30%	-0.27%

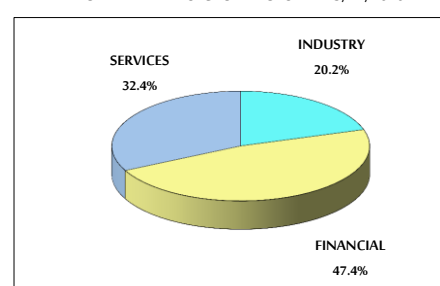
MARKET CAPITALIZATION (JD)

	12,301,204,050	12,284,093,585	-0.14%	-17.64%
--	----------------	----------------	--------	---------

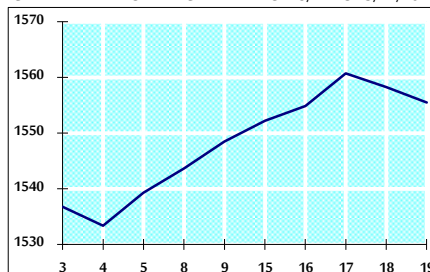
VALUE TRADED FROM 3/11 TO 19/11/2020



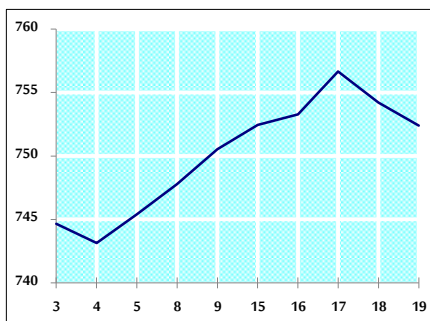
VALUE TRADED BY SECTOR THURSDAY 19/11/2020



GENERAL FREE FLOAT PRICE INDEX FROM 3/11 TO 19/11/2020



ASE20 FREE FLOAT PRICE INDEX FROM 3/11 TO 19/11/2020



GENERAL PRICE INDEX FROM 3/11 TO 19/11/2020

