

Daily Summary for Amman Stock Exchange

VALUE TRADED (JD)

	2019	2020	NET CHANGE	CHANGE (%)
Daily	3,375,078	4,083,594	708,516	20.99%
Cumulative(1/11-25/11)	74,865,885	62,739,921	-12,125,964	-16.20%
Cumulative(2/1-25/11)	1,411,923,444	852,832,631	-559,090,813	-39.60%

NO. OF SHARES TRADED

	2019	2020	NET CHANGE	CHANGE (%)
Daily	3,070,381	4,534,894	1,464,513	47.70%
Cumulative(1/11-25/11)	72,765,607	82,903,358	10,137,751	13.93%
Cumulative(2/1-25/11)	1,094,865,562	958,967,381	-135,898,181	-12.41%

NO. OF TRANSACTIONS

	2019	2020	NET CHANGE	CHANGE (%)
Daily	1,504	2,055	551	36.64%
Cumulative(1/11-25/11)	27,538	27,969	431	1.57%
Cumulative(2/1-25/11)	458,386	362,722	-95,664	-20.87%

SOME FINANCIAL RATIOS FOR THE ASE (25/11/2020)

SECTOR	P/E	P/BV	DIVIDEND YIELD (%)	TURNOVER (%)
FINANCIAL	8.867	0.719	0.175	0.051
SERVICES	11.198	0.973	5.463	0.064
INDUSTRY	15.552	1.163	4.113	0.188
OVERALL	9.430	0.803	1.926	0.071

STOCK PRICE INDEX WEIGHTED BY FREE FLOAT MARKET CAPITALIZATION (1999=1000)

	TUESDAY 24/11/2020	WEDNESDAY 25/11/2020	% CHANGE	
			DAY BEFORE	YTD
GENERAL	1554.4	1561.1	0.43%	-14.00%
FINANCIAL	2063.9	2075.3	0.55%	-15.29%
SERVICES	1072.2	1070.4	-0.17%	-17.22%
INDUSTRY	1960.2	1972.7	0.64%	6.23%

STOCK PRICE INDEX WEIGHTED BY FREE FLOAT MARKET CAPITALIZATION ASE20 (2014=1000)

	752.3	756.4	0.55%	-15.10%
--	-------	-------	-------	---------

STOCK PRICE INDEX WEIGHTED BY MARKET CAPITALIZATION (1991=1000)

	TUESDAY 24/11/2020	WEDNESDAY 25/11/2020	% CHANGE	
			DAY BEFORE	YTD
GENERAL	2876.7	2879.5	0.10%	-18.05%
BANKS	5235.3	5224.8	-0.20%	-26.37%
INSURANCE	1295.9	1297.0	0.09%	1.13%
SERVICES	664.9	665.7	0.13%	-9.52%
INDUSTRY	2505.7	2524.8	0.76%	-3.38%

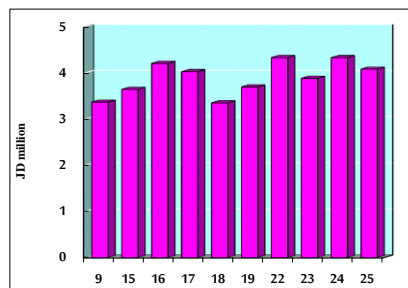
STOCK PRICE MARKET INDEX WEIGHTED BY FREE FLOAT MARKET CAP. (2012=1000)

	TUESDAY 24/11/2020	WEDNESDAY 25/11/2020	% CHANGE	
			DAY BEFORE	YTD
FIRST MARKET	811.6	816.0	0.55%	-14.63%
SECOND MARKET	829.6	830.1	0.06%	-0.71%

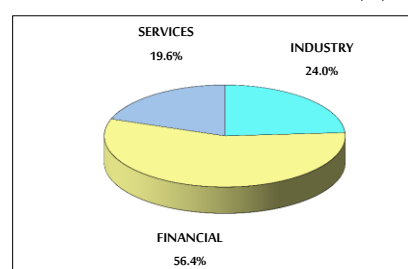
MARKET CAPITALIZATION (JD)

	12,295,344,444	12,304,916,504	0.08%	-17.50%
--	----------------	----------------	-------	---------

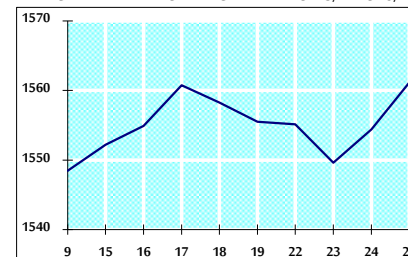
VALUE TRADED FROM 9/11 TO 25/11/2020



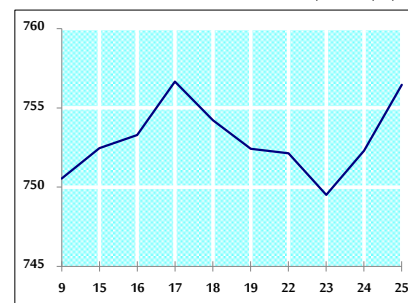
VALUE TRADED BY SECTOR WEDNESDAY 25/11/2020



GENERAL FREE FLOAT PRICE INDEX FROM 9/11 TO 25/11/2020



ASE20 FREE FLOAT PRICE INDEX FROM 9/11 TO 25/11/2020



GENERAL PRICE INDEX FROM 9/11 TO 25/11/2020

