

Daily Summary for Amman Stock Exchange

VALUE TRADED (JD)

	2019	2020	NET CHANGE	CHANGE (%)
Daily	3,006,077	6,037,874	3,031,797	100.86%
Cumulative(1/12-15/12)	59,552,711	85,583,077	26,030,366	43.71%
Cumulative(2/1-15/12)	1,486,523,769	953,205,412	-533,318,357	-35.88%

NO. OF SHARES TRADED

	2019	2020	NET CHANGE	CHANGE (%)
Daily	3,411,779	6,168,230	2,756,451	80.79%
Cumulative(1/12-15/12)	61,413,609	81,306,003	19,892,394	32.39%
Cumulative(2/1-15/12)	1,172,318,840	1,055,699,826	-116,619,014	-9.95%

NO. OF TRANSACTIONS

	2019	2020	NET CHANGE	CHANGE (%)
Daily	1,869	1,878	9	0.48%
Cumulative(1/12-15/12)	19,805	25,288	5,483	27.68%
Cumulative(2/1-15/12)	485,612	394,351	-91,261	-18.79%

SOME FINANCIAL RATIOS FOR THE ASE (15/12/2020)

SECTOR	P/E	P/BV	DIVIDEND YIELD (%)	TURNOVER (%)
FINANCIAL	9.054	0.735	0.171	0.108
SERVICES	11.535	1.002	5.303	0.098
INDUSTRY	16.316	1.220	3.920	0.038
OVERALL	9.733	0.829	1.867	0.097

STOCK PRICE INDEX WEIGHTED BY FREE FLOAT MARKET CAPITALIZATION (1999=1000)

	MONDAY 14/12/2020	TUESDAY 15/12/2020	% CHANGE	
			DAY BEFORE	YTD
GENERAL	1609.0	1615.3	0.39%	-11.01%
FINANCIAL	2134.0	2137.1	0.14%	-12.77%
SERVICES	1098.1	1108.0	0.90%	-14.31%
INDUSTRY	2046.9	2049.0	0.10%	10.34%

STOCK PRICE INDEX WEIGHTED BY FREE FLOAT MARKET CAPITALIZATION ASE20 (2014=1000)

	MONDAY 14/12/2020	TUESDAY 15/12/2020	% CHANGE DAY BEFORE	% CHANGE YTD
	780.9	782.8	0.24%	-12.14%

STOCK PRICE INDEX WEIGHTED BY MARKET CAPITALIZATION (1991=1000)

	MONDAY 14/12/2020	TUESDAY 15/12/2020	% CHANGE	
			DAY BEFORE	YTD
GENERAL	2969.8	2972.4	0.09%	-15.41%
BANKS	5323.9	5327.1	0.06%	-24.92%
INSURANCE	1315.5	1312.1	-0.25%	2.31%
SERVICES	693.6	691.9	-0.25%	-5.96%
INDUSTRY	2661.3	2670.1	0.33%	2.18%

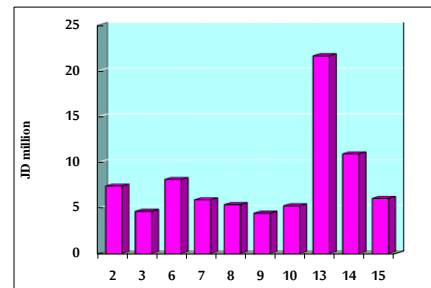
STOCK PRICE MARKET INDEX WEIGHTED BY FREE FLOAT MARKET CAP. (2012=1000)

	MONDAY 14/12/2020	TUESDAY 15/12/2020	% CHANGE	
			DAY BEFORE	YTD
FIRST MARKET	841.5	844.2	0.32%	-11.68%
SECOND MARKET	860.7	865.7	0.58%	3.54%

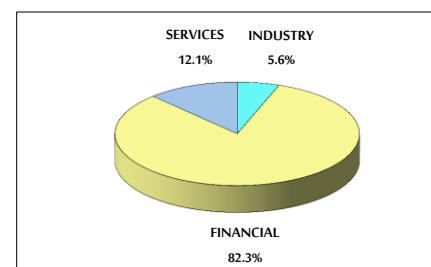
MARKET CAPITALIZATION (JD)

	2019	2020	% CHANGE	% CHANGE
	12,630,001,565	12,637,131,108	0.06%	-15.27%

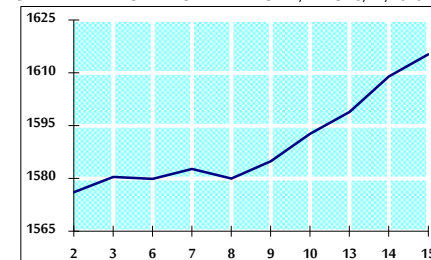
VALUE TRADED FROM 2/12 TO 15/12/2020



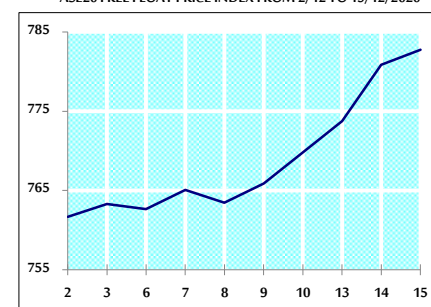
VALUE TRADED BY SECTOR TUESDAY 15/12/2020



GENERAL FREE FLOAT PRICE INDEX FROM 2/12 TO 15/12/2020



ASE20 FREE FLOAT PRICE INDEX FROM 2/12 TO 15/12/2020



GENERAL PRICE INDEX FROM 2/12 TO 15/12/2020

