

Daily Summary for Amman Stock Exchange

VALUE TRADED (JD)

	2019	2020	NET CHANGE	CHANGE (%)
Daily	4,685,527	3,407,406	-1,278,121	-27.28%
Cumulative(1/12-17/12)	67,720,875	93,772,718	26,051,843	38.47%
Cumulative(2/1-17/12)	1,494,691,933	961,395,053	-533,296,880	-35.68%

NO. OF SHARES TRADED

	2019	2020	NET CHANGE	CHANGE (%)
Daily	3,878,949	3,330,572	-548,377	-14.14%
Cumulative(1/12-17/12)	68,256,796	88,360,936	20,104,140	29.45%
Cumulative(2/1-17/12)	1,179,162,027	1,062,754,759	-116,407,268	-9.87%

NO. OF TRANSACTIONS

	2019	2020	NET CHANGE	CHANGE (%)
Daily	1,870	1,654	-216	-11.55%
Cumulative(1/12-17/12)	23,240	28,707	5,467	23.52%
Cumulative(2/1-17/12)	489,047	397,770	-91,277	-18.66%

SOME FINANCIAL RATIOS FOR THE ASE (17/12/2020)

SECTOR	P/E	P/BV	DIVIDEND YIELD (%)	TURNOVER (%)
FINANCIAL	9.003	0.731	0.172	0.045
SERVICES	11.552	1.004	5.296	0.059
INDUSTRY	16.417	1.228	3.896	0.078
OVERALL	9.724	0.828	1.868	0.052

STOCK PRICE INDEX WEIGHTED BY FREE FLOAT MARKET CAPITALIZATION (1999=1000)

	WEDNESDAY 16/12/2020	THURSDAY 17/12/2020	% CHANGE	
			DAY BEFORE	YTD
GENERAL	1613.8	1615.7	0.12%	-10.99%
FINANCIAL	2131.2	2131.0	-0.01%	-13.02%
SERVICES	1111.0	1113.2	0.20%	-13.90%
INDUSTRY	2042.9	2048.7	0.28%	10.33%

STOCK PRICE INDEX WEIGHTED BY FREE FLOAT MARKET CAPITALIZATION ASE20 (2014=1000)

	782.0	783.5	0.19%	-12.06%
--	-------	-------	-------	---------

STOCK PRICE INDEX WEIGHTED BY MARKET CAPITALIZATION (1991=1000)

	WEDNESDAY 16/12/2020	THURSDAY 17/12/2020	% CHANGE	
			DAY BEFORE	YTD
GENERAL	2964.4	2969.7	0.18%	-15.48%
BANKS	5308.1	5302.8	-0.10%	-25.27%
INSURANCE	1297.8	1299.3	0.12%	1.31%
SERVICES	693.7	693.9	0.02%	-5.69%
INDUSTRY	2658.1	2682.4	0.91%	2.65%

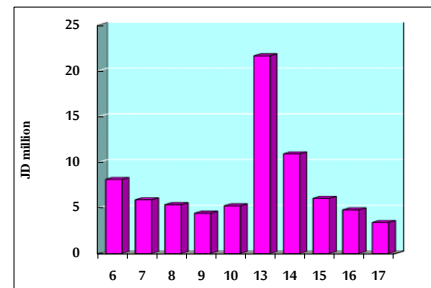
STOCK PRICE MARKET INDEX WEIGHTED BY FREE FLOAT MARKET CAP. (2012=1000)

	WEDNESDAY 16/12/2020	THURSDAY 17/12/2020	% CHANGE	
			DAY BEFORE	YTD
FIRST MARKET	843.3	844.6	0.16%	-11.64%
SECOND MARKET	864.7	864.1	-0.07%	3.35%

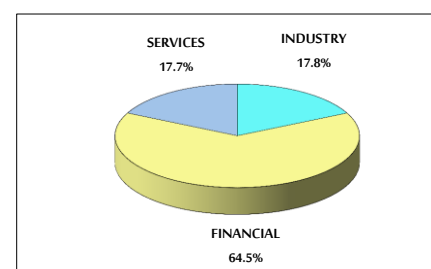
MARKET CAPITALIZATION (JD)

	12,604,833,905	12,616,272,395	0.09%	-15.41%
--	----------------	----------------	-------	---------

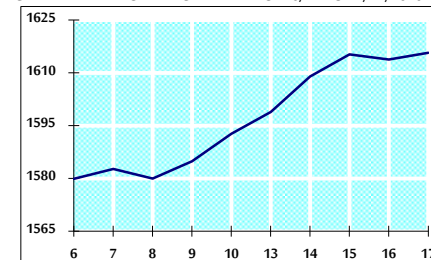
VALUE TRADED FROM 6/12 TO 17/12/2020



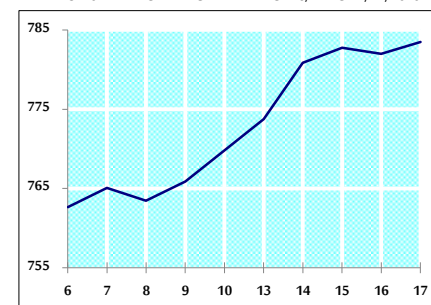
VALUE TRADED BY SECTOR THURSDAY 17/12/2020



GENERAL FREE FLOAT PRICE INDEX FROM 6/12 TO 17/12/2020



ASE20 FREE FLOAT PRICE INDEX FROM 6/12 TO 17/12/2020



GENERAL PRICE INDEX FROM 6/12 TO 17/12/2020

