

Daily Summary for Amman Stock Exchange

VALUE TRADED (JD)

	2019	2020	NET CHANGE	CHANGE (%)
Daily	10,864,871	4,135,802	-6,729,069	-61.93%
Cumulative(1/12-21/12)	123,591,208	102,959,489	-20,631,719	-16.69%
Cumulative(2/1-21/12)	1,550,562,266	970,581,824	-579,980,442	-37.40%

NO. OF SHARES TRADED

	2019	2020	NET CHANGE	CHANGE (%)
Daily	8,209,432	4,036,543	-4,172,889	-50.83%
Cumulative(1/12-21/12)	107,002,893	97,707,943	-9,294,950	-8.69%
Cumulative(2/1-21/12)	1,217,908,124	1,072,101,766	-145,806,358	-11.97%

NO. OF TRANSACTIONS

	2019	2020	NET CHANGE	CHANGE (%)
Daily	1,784	2,025	241	13.51%
Cumulative(1/12-21/12)	26,863	32,632	5,769	21.48%
Cumulative(2/1-21/12)	492,670	401,695	-90,975	-18.47%

SOME FINANCIAL RATIOS FOR THE ASE (21/12/2020)

SECTOR	P/E	P/BV	DIVIDEND YIELD (%)	TURNOVER (%)
FINANCIAL	9.050	0.735	0.171	0.057
SERVICES	11.680	1.015	5.238	0.064
INDUSTRY	16.469	1.232	3.884	0.098
OVERALL	9.783	0.833	1.857	0.063

STOCK PRICE INDEX WEIGHTED BY FREE FLOAT MARKET CAPITALIZATION (1999=1000)

	SUNDAY 20/12/2020	MONDAY 21/12/2020	% CHANGE	
			DAY BEFORE	YTD
GENERAL	1625.8	1624.1	-0.11%	-10.53%
FINANCIAL	2142.3	2138.2	-0.19%	-12.73%
SERVICES	1122.2	1126.6	0.40%	-12.87%
INDUSTRY	2056.5	2043.2	-0.65%	10.03%

STOCK PRICE INDEX WEIGHTED BY FREE FLOAT MARKET CAPITALIZATION ASE20 (2014=1000)

	789.4	788.3	-0.13%	-11.52%
--	-------	-------	--------	---------

STOCK PRICE INDEX WEIGHTED BY MARKET CAPITALIZATION (1991=1000)

	SUNDAY 20/12/2020	MONDAY 21/12/2020	% CHANGE	
			DAY BEFORE	YTD
GENERAL	2994.4	2987.7	-0.22%	-14.97%
BANKS	5355.4	5335.3	-0.37%	-24.81%
INSURANCE	1299.2	1304.5	0.41%	1.72%
SERVICES	697.8	699.0	0.18%	-4.99%
INDUSTRY	2700.9	2695.5	-0.20%	3.15%

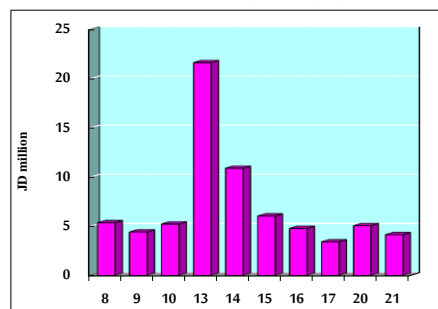
STOCK PRICE MARKET INDEX WEIGHTED BY FREE FLOAT MARKET CAP. (2012=1000)

	SUNDAY 20/12/2020	MONDAY 21/12/2020	% CHANGE	
			DAY BEFORE	YTD
FIRST MARKET	850.9	849.8	-0.12%	-11.09%
SECOND MARKET	864.6	862.7	-0.22%	3.18%

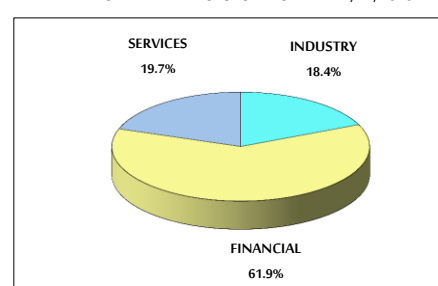
MARKET CAPITALIZATION (JD)

	12,706,372,796	12,682,759,636	-0.19%	-14.97%
--	----------------	----------------	--------	---------

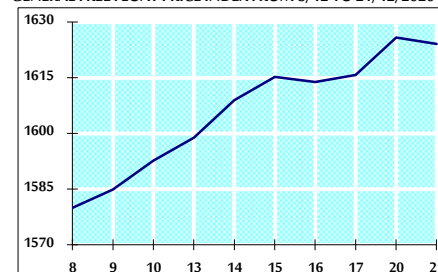
VALUE TRADED FROM 8/12 TO 21/12/2020



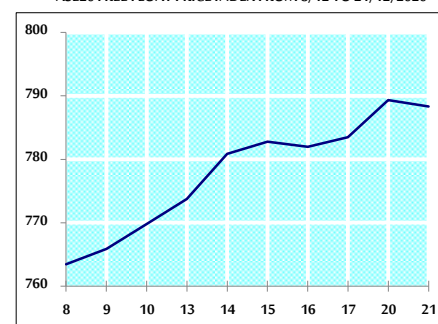
VALUE TRADED BY SECTOR MONDAY 21/12/2020



GENERAL FREE FLOAT PRICE INDEX FROM 8/12 TO 21/12/2020



ASE20 FREE FLOAT PRICE INDEX FROM 8/12 TO 21/12/2020



GENERAL PRICE INDEX FROM 8/12 TO 21/12/2020

