

Daily Summary for Amman Stock Exchange

VALUE TRADED (JD)

	2019	2020	NET CHANGE	CHANGE (%)
Daily	3,078,651	5,725,257	2,646,606	85.97%
Cumulative(1/12-27/12)	144,430,749	132,316,559	-12,114,190	-8.39%
Cumulative(2/1-27/12)	1,571,401,807	999,938,894	-571,462,913	-36.37%

NO. OF SHARES TRADED

	2019	2020	NET CHANGE	CHANGE (%)
Daily	2,954,248	5,732,441	2,778,193	94.04%
Cumulative(1/12-27/12)	123,767,832	126,725,315	2,957,483	2.39%
Cumulative(2/1-27/12)	1,234,673,063	1,101,119,138	-133,553,925	-10.82%

NO. OF TRANSACTIONS

	2019	2020	NET CHANGE	CHANGE (%)
Daily	1,499	2,194	695	46.36%
Cumulative(1/12-27/12)	32,195	40,633	8,438	26.21%
Cumulative(2/1-27/12)	498,002	409,696	-88,306	-17.73%

SOME FINANCIAL RATIOS FOR THE ASE (27/12/2020)

SECTOR	P/E	P/BV	DIVIDEND YIELD (%)	TURNOVER (%)
FINANCIAL	9.095	0.738	0.170	0.087
SERVICES	11.717	1.018	5.221	0.069
INDUSTRY	17.102	1.279	3.740	0.122
OVERALL	9.928	0.846	1.830	0.088

STOCK PRICE INDEX WEIGHTED BY FREE FLOAT MARKET CAPITALIZATION (1999=1000)

	THURSDAY 24/12/2020	SUNDAY 27/12/2020	% CHANGE	
			DAY BEFORE	YTD
GENERAL	1632.1	1635.4	0.20%	-9.90%
FINANCIAL	2137.8	2147.8	0.47%	-12.34%
SERVICES	1135.4	1126.4	-0.79%	-12.89%
INDUSTRY	2084.0	2095.5	0.55%	12.84%

STOCK PRICE INDEX WEIGHTED BY FREE FLOAT MARKET CAPITALIZATION ASE20 (2014=1000)

	THURSDAY 24/12/2020	SUNDAY 27/12/2020	% CHANGE	DAY BEFORE	YTD
	793.6	795.4	0.22%		-10.73%

STOCK PRICE INDEX WEIGHTED BY MARKET CAPITALIZATION (1991=1000)

	THURSDAY 24/12/2020	SUNDAY 27/12/2020	% CHANGE	
			DAY BEFORE	YTD
GENERAL	3024.2	3032.2	0.26%	-13.71%
BANKS	5328.5	5361.6	0.62%	-24.44%
INSURANCE	1304.0	1305.8	0.14%	1.82%
SERVICES	703.8	700.4	-0.48%	-4.80%
INDUSTRY	2822.2	2822.0	-0.01%	7.99%

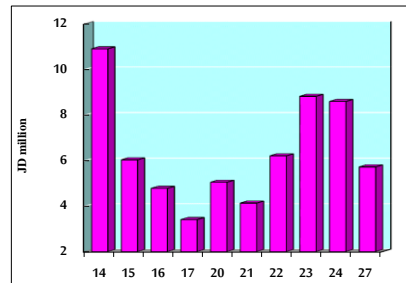
STOCK PRICE MARKET INDEX WEIGHTED BY FREE FLOAT MARKET CAP. (2012=1000)

	THURSDAY 24/12/2020	SUNDAY 27/12/2020	% CHANGE	
			DAY BEFORE	YTD
FIRST MARKET	854.5	856.2	0.20%	-10.42%
SECOND MARKET	864.4	866.6	0.25%	3.66%

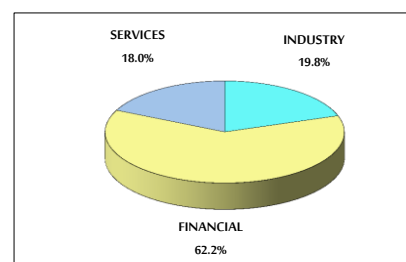
MARKET CAPITALIZATION (JD)

	THURSDAY 24/12/2020	SUNDAY 27/12/2020	% CHANGE	DAY BEFORE	YTD
	12,808,294,852	12,830,397,598	0.17%		-13.98%

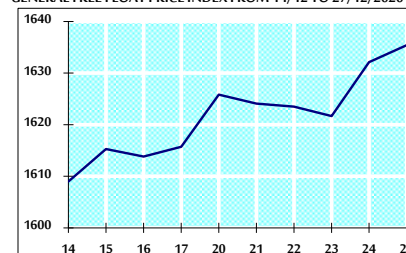
VALUE TRADED FROM 14/12 TO 27/12/2020



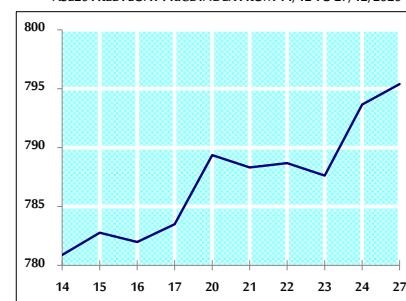
VALUE TRADED BY SECTOR SUNDAY 27/12/2020



GENERAL FREE FLOAT PRICE INDEX FROM 14/12 TO 27/12/2020



ASE20 FREE FLOAT PRICE INDEX FROM 14/12 TO 27/12/2020



GENERAL PRICE INDEX FROM 14/12 TO 27/12/2020

