

Daily Summary for Amman Stock Exchange

VALUE TRADED (JD)

	2020	2021	NET CHANGE	CHANGE (%)
Daily	2,524,953	6,865,834	4,340,881	171.92%
Cumulative(3/1-4/1)	6,692,809	14,485,899	7,793,090	116.44%
Cumulative(3/1-4/1)	6,692,809	14,485,899	7,793,090	116.44%

NO. OF SHARES TRADED

	2020	2021	NET CHANGE	CHANGE (%)
Daily	2,463,913	7,767,070	5,303,157	215.23%
Cumulative(3/1-4/1)	5,685,461	15,504,812	9,819,351	172.71%
Cumulative(3/1-4/1)	5,685,461	15,504,812	9,819,351	172.71%

NO. OF TRANSACTIONS

	2020	2021	NET CHANGE	CHANGE (%)
Daily	1,465	2,958	1,493	101.91%
Cumulative(3/1-4/1)	2,927	5,326	2,399	81.96%
Cumulative(3/1-4/1)	2,927	5,326	2,399	81.96%

SOME FINANCIAL RATIOS FOR THE ASE (4/1/2021)

SECTOR	P/E	P/BV	DIVIDEND YIELD (%)	TURNOVER (%)
FINANCIAL	9.251	0.749	0.168	0.087
SERVICES	11.830	1.031	5.153	0.131
INDUSTRY	17.579	1.279	3.737	0.293
OVERALL	10.123	0.853	1.807	0.122

STOCK PRICE INDEX WEIGHTED BY FREE FLOAT MARKET CAPITALIZATION (1999=1000)

	SUNDAY 03/01/2021	MONDAY 04/01/2021	% CHANGE	
			DAY BEFORE	YTD
GENERAL	1658.8	1662.1	0.20%	0.29%
FINANCIAL	2177.9	2187.3	0.43%	0.72%
SERVICES	1141.8	1139.7	-0.18%	-0.72%
INDUSTRY	2124.7	2119.1	-0.26%	-0.03%

STOCK PRICE INDEX WEIGHTED BY FREE FLOAT MARKET CAPITALIZATION ASE20 (2014=1000)

	805.6	806.1	0.06%	-0.05%
--	-------	-------	-------	--------

STOCK PRICE INDEX WEIGHTED BY MARKET CAPITALIZATION (1991=1000)

	SUNDAY 03/01/2021	MONDAY 04/01/2021	% CHANGE	
			DAY BEFORE	YTD
GENERAL	3057.5	3061.9	0.14%	0.40%
BANKS	5422.2	5436.6	0.27%	0.48%
INSURANCE	1297.6	1307.6	0.77%	-0.12%
SERVICES	709.7	710.5	0.12%	0.89%
INDUSTRY	2819.9	2816.7	-0.11%	-0.05%

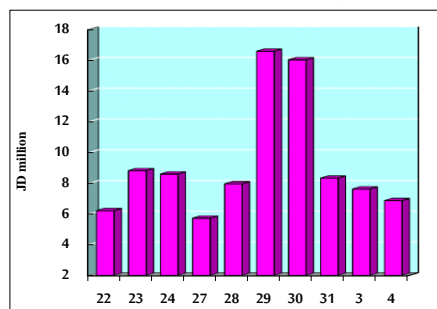
STOCK PRICE MARKET INDEX WEIGHTED BY FREE FLOAT MARKET CAP. (2012=1000)

	SUNDAY 03/01/2021	MONDAY 04/01/2021	% CHANGE	
			DAY BEFORE	YTD
FIRST MARKET	867.2	868.1	0.09%	-0.04%
SECOND MARKET	884.0	891.0	0.80%	2.25%

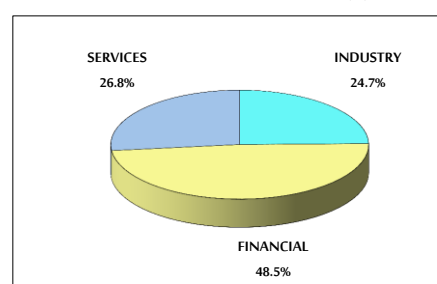
MARKET CAPITALIZATION (JD)

	12,934,775,415	12,951,846,267	0.13%	0.34%
--	----------------	----------------	-------	-------

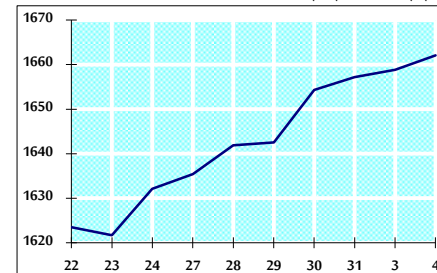
VALUE TRADED FROM 22/12/2020 TO 4/1/2021



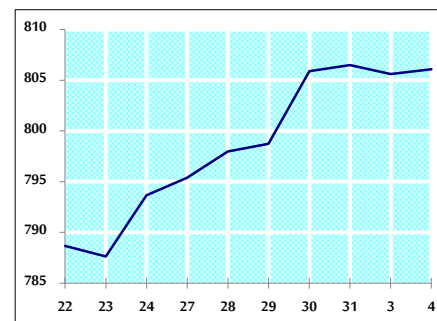
VALUE TRADED BY SECTOR MONDAY 4/1/2021



GENERAL FREE FLOAT PRICE INDEX FROM 22/12/2020 TO 4/1/2021



ASE20 FREE FLOAT PRICE INDEX FROM 22/12/2020 TO 4/1/2021



GENERAL PRICE INDEX FROM 22/12/2020 TO 4/1/2021

