

## Daily Summary for Amman Stock Exchange

### VALUE TRADED (JD)

	2020	2021	NET CHANGE	CHANGE (%)
Daily	3,842,304	7,224,867	3,382,563	88.03%
Cumulative(3/1-5/1)	10,535,113	21,710,766	11,175,653	106.08%
Cumulative(3/1-5/1)	10,535,113	21,710,766	11,175,653	106.08%

### NO. OF SHARES TRADED

	2020	2021	NET CHANGE	CHANGE (%)
Daily	3,918,265	7,871,954	3,953,689	100.90%
Cumulative(3/1-5/1)	9,603,726	23,376,766	13,773,040	143.41%
Cumulative(3/1-5/1)	9,603,726	23,376,766	13,773,040	143.41%

### NO. OF TRANSACTIONS

	2020	2021	NET CHANGE	CHANGE (%)
Daily	2,153	3,153	1,000	46.45%
Cumulative(3/1-5/1)	5,080	8,479	3,399	66.91%
Cumulative(3/1-5/1)	5,080	8,479	3,399	66.91%

### SOME FINANCIAL RATIOS FOR THE ASE (5/1/2021)

SECTOR	P/E	P/BV	DIVIDEND YIELD (%)	TURNOVER (%)
FINANCIAL	9.288	0.752	0.167	0.087
SERVICES	12.006	1.046	5.078	0.135
INDUSTRY	17.592	1.280	3.734	0.299
OVERALL	10.179	0.857	1.798	0.124

### STOCK PRICE INDEX WEIGHTED BY FREE FLOAT MARKET CAPITALIZATION (1999=1000)

	MONDAY 04/01/2021	TUESDAY 05/01/2021	% CHANGE	
			DAY BEFORE	YTD
GENERAL	1662.1	1673.5	0.68%	0.98%
FINANCIAL	2187.3	2196.5	0.42%	1.15%
SERVICES	1139.7	1153.8	1.24%	0.50%
INDUSTRY	2119.1	2128.2	0.43%	0.40%

### STOCK PRICE INDEX WEIGHTED BY FREE FLOAT MARKET CAPITALIZATION ASE20 (2014=1000)

	806.1	811.8	0.71%	0.66%
--	-------	-------	-------	-------

### STOCK PRICE INDEX WEIGHTED BY MARKET CAPITALIZATION (1991=1000)

	MONDAY 04/01/2021	TUESDAY 05/01/2021	% CHANGE	
			DAY BEFORE	YTD
GENERAL	3061.9	3078.5	0.54%	0.95%
BANKS	5436.6	5459.0	0.41%	0.89%
INSURANCE	1307.6	1296.4	-0.85%	-0.97%
SERVICES	710.5	721.3	1.52%	2.42%
INDUSTRY	2816.7	2824.2	0.27%	0.22%

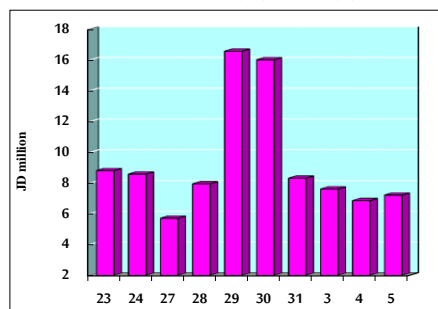
### STOCK PRICE MARKET INDEX WEIGHTED BY FREE FLOAT MARKET CAP. (2012=1000)

	MONDAY 04/01/2021	TUESDAY 05/01/2021	% CHANGE	
			DAY BEFORE	YTD
FIRST MARKET	868.1	873.6	0.64%	0.60%
SECOND MARKET	891.0	900.4	1.06%	3.33%

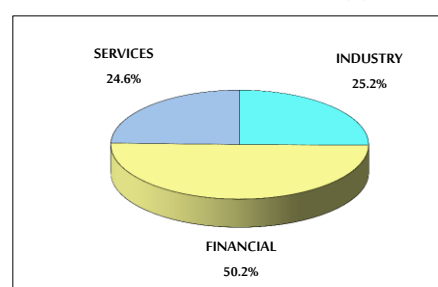
### MARKET CAPITALIZATION (JD)

	12,951,846,267	13,011,134,481	0.46%	0.80%
--	----------------	----------------	-------	-------

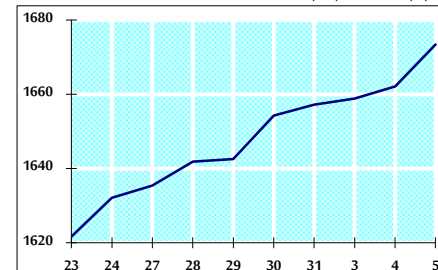
### VALUE TRADED FROM 23/12/2020 TO 5/1/2021



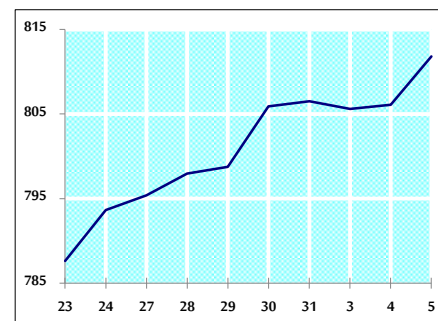
### VALUE TRADED BY SECTOR TUESDAY 5/1/2021



### GENERAL FREE FLOAT PRICE INDEX FROM 23/12/2020 TO 5/1/2021



### ASE20 FREE FLOAT PRICE INDEX FROM 23/12/2020 TO 5/1/2021



### GENERAL PRICE INDEX FROM 23/12/2020 TO 5/1/2021

