

## Daily Summary for Amman Stock Exchange

### VALUE TRADED (JD)

	2025	2026	NET CHANGE	CHANGE (%)
Daily	7,811,303	14,214,944	6,403,641	81.98%
Cumulative (3/5-6/5)	39,927,136	55,587,758	15,660,622	39.22%
Cumulative (4/1-6/5)	544,597,214	1,050,734,106	506,136,892	92.94%

### NO. OF SHARES TRADED

	2025	2026	NET CHANGE	CHANGE (%)
Daily	4,177,935	6,070,058	1,892,123	45.29%
Cumulative (3/5-6/5)	18,087,417	25,525,391	7,437,974	41.12%
Cumulative (4/1-6/5)	283,720,555	362,329,679	78,609,124	27.71%

### NO. OF TRANSACTIONS

	2025	2026	NET CHANGE	CHANGE (%)
Daily	2,711	4,374	1,663	61.34%
Cumulative (3/5-6/5)	12,509	18,199	5,690	45.49%
Cumulative (4/1-6/5)	181,226	295,661	114,435	63.14%

### SOME FINANCIAL RATIOS FOR THE ASE (6/5/2026)

SECTOR	P/E	P/BV	DIVIDEND YIELD (%)	TURNOVER (%)
FINANCIAL	9.426	0.965	5.062	0.070
SERVICES	12.914	1.469	4.857	0.070
INDUSTRY	15.611	2.781	4.992	0.250
OVERALL	11.633	1.473	5.141	0.094

### ASE GENERAL FREE FLOAT WEIGHTED INDEX ASEGI (1999=1000)

	TUESDAY 05/05/2026	WEDNESDAY 06/05/2026	% CHANGE	
			DAY BEFORE	YTD
GENERAL INDEX ASEGI	3838.8	3862.5	0.62%	6.95%
FINANCIAL	3757.0	3777.5	0.55%	0.05%
SERVICES	2526.9	2550.9	0.95%	17.43%
INDUSTRY	10035.5	10059.9	0.24%	13.38%

### ASE FREE FLOAT WEIGHTED INDEX ASE20 (2014=1000)

	2098.8	2111.0	0.58%	6.69%
--	--------	--------	-------	-------

### TOTAL RETURN INDEX ASETR (2021=1074)

	2903.8	2920.7	0.58%	12.24%
--	--------	--------	-------	--------

### ASE WEIGHTED INDEX (1991=1000)

	TUESDAY 05/05/2026	WEDNESDAY 06/05/2026	% CHANGE	
			DAY BEFORE	YTD
GENERAL	7613.5	7644.4	0.41%	8.34%
BANKS	9506.6	9556.6	0.53%	1.20%
INSURANCE	1915.5	1911.7	-0.20%	7.20%
SERVICES	1126.3	1140.9	1.30%	4.89%
INDUSTRY	13207.3	13226.6	0.15%	15.99%

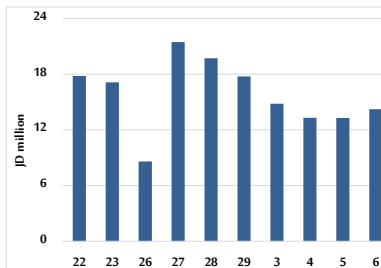
### MARKET INDICES WEIGHTED BY FREE FLOAT MARKET CAP. (2012=1000)

	TUESDAY 05/05/2026	WEDNESDAY 06/05/2026	% CHANGE	
			DAY BEFORE	YTD
FIRST MARKET	2171.7	2184.1	0.57%	7.07%
SECOND MARKET	1005.4	1018.2	1.27%	-0.41%

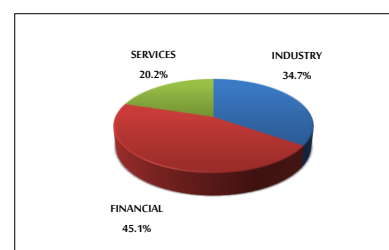
### MARKET CAPITALIZATION (JD)

	28,506,487,710	28,617,486,208	0.39%	8.02%
--	----------------	----------------	-------	-------

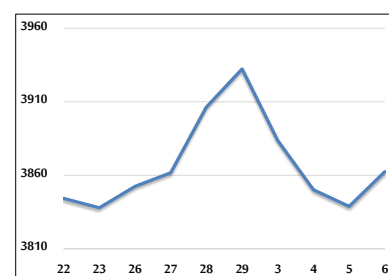
### VALUE TRADED FROM 22/4 TO 6/5/2026



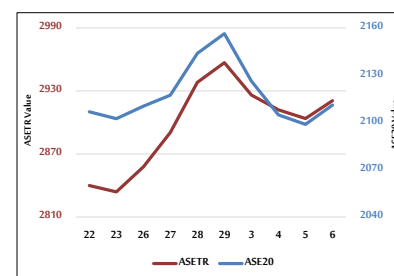
### VALUE TRADED BY SECTOR WEDNESDAY 6/5/2026



### ASE GENERAL FREE FLOAT WEIGHTED INDEX 22/4 TO 6/5/2026



### ASE20 INDEX & ASETR INDEX FROM 22/4 TO 6/5/2026



### ASE WEIGHTED INDEX FROM 22/4 TO 6/5/2026

